

Waterfowl Impoundment Condition Report

Updated December 15, 2009

NOTE: For all areas, refer to the current North Carolina Inland Fishing, Hunting and Trapping Regulations Digest to determine applicable hunt days for waterfowl and special regulations which may apply.

On managed (posted) waterfowl impoundments, hunters shall not enter the posted impoundment areas earlier than 4:00 a.m. on the permitted hunting dates, and hunting is prohibited after 1:00 p.m. on such hunting dates; decoys shall not be set out prior to 4:00 a.m. and must be removed by 3:00 p.m. each day. No person shall operate any vessel or vehicle powered by an internal combustion engine on a managed waterfowl impoundment. On waterfowl impoundments that have a posted "Scouting-only Zone," trapping during the trapping season and waterfowl hunting on designated waterfowl hunting days are the only activities allowed on the portion of the impoundment outside of the posted "Scouting-only Zone."

Due to unanticipated structure failures and recent improvement projects, some waterfowl impoundments may not be flooded or otherwise may contain less than desirable water levels for optimal hunting conditions. Below is a list of current conditions:

COASTAL REGION

North River Game Land

Hunt Areas: NR1, NR2, and NR3 Impoundments (Permit Only Areas)

This area has three sub-impoundments. One sub-impoundment is managed for aquatic vegetation and the other two are managed for moist soil plants and are also planted with Japanese millet and milo. All areas are flooded and offer hunting opportunities.

J. Morgan Futch Game Land

Hunt Areas: JMF1, JMF2, and JMF3 Impoundments (Permit Only Areas)

All areas are flooded and good hunting locations in each waterfowl hunt unit should be available. A variety of management is done on these impoundments including moist soil, aquatic, and flooded cropland with grain crops left. Call (252) 482-7701 prior to scheduled hunt dates for updated information on condition of impoundments.

Roanoke River Wetlands Game Land

Hunt Areas: Conoho Farms Impoundments; Unit A and Unit B (Permit Only Areas)

Unit's A and B have been combined this year to provide hunters with increased hunting areas. A hunter with a permit can hunt in either zone. The Dr. Ray D. Minges Impoundment's have adequate water levels and offer hunting opportunities. Swamp habitat is included in the area and offers additional opportunities. Impoundments have moist soil plants including smartweed and sedges as well as some planted Japanese millet and milo. Call (252) 792-3868 prior to scheduled hunts for updated information on condition of impoundments.

The Roanoke River water level has been high due to recent rains and releases of water from upstream. This has resulted in many back swamp areas being flooded and additional hunting opportunities on several tracts within the Roanoke River Game Land. It has also resulted in the main Conoho Farms road by Moratoc Park being closed due to high water. Call (252) 792-3868 to determine future opened/closed status of this road.

Gull Rock Game Land

Hunt Area: Loop Road Impoundment (Non-Permit Area)

This impoundment is managed for aquatic vegetation and is currently flooded and offers hunting opportunities.

Lantern Acres Game Land

Hunt Area: Posted Waterfowl Impoundments (Permit Only Areas)

Two impoundments are located at Lantern Acres. Japanese millet and smartweed have been planted in both to provide additional food sources. These impoundments are managed for moist soil plant species. Both impoundments are flooded and offer hunting opportunities. For more information call (252) 482-7701 prior to your scheduled hunt.

Goose Creek Game Land

Hunt Areas: Pamlico Point, Campbell Creek, Spring Creek, Hunting Creek, Smith Creek, Hobucken impoundments (All Permit Areas after Oct. 1) and Parker Farm (Permit Only Area)

All Goose Creek waterfowl impoundments are flooded to fall levels and hunters should have ample areas to hunt. The Parker Farm has received sufficient rainfall and currently has huntable water throughout. Waterfowlers hunting at Pamlico Point should be aware of several newly constructed interior drainage ditches and cleaned rim canals. (Refer to Ditch Location Map at end of this report).

Croatan Game Land

Hunt Areas: Catfish Lake Impoundment, Great Lake and Catfish Lake (Non-Permit Areas)

Both Catfish Lake and Great Lakes support water levels sufficient to attract waterfowl and provide hunting opportunities. Catfish Lake Impoundments 1, 2 3, 4, and 6 have

adequate water levels for the Dec. 19 segment. Millet and excellent stands of native vegetation, especially smartweed and barnyard grass, are present.

Holly Shelter Game Land

Hunt Areas: Lodge Road Impoundment and Greentrees 1 & 2 (Non-Permit Areas)

All impoundments are currently flooded with adequate water levels and offer hunting opportunities. Call (910) 259-5555 for updated information on the condition of these impoundments.

Rhodes Pond Game Land

Hunt Area: Rhodes Mill Pond (Permit Only Area)

Rhodes Mill Pond has sufficient water levels to offer waterfowl hunting opportunities.

Suggs Mill Pond Game Land

Hunt Areas: SMP1, SMP2, SMP3, SMP4, SMP5, Jessup's Mill Pond, Little Singletary Lake, and Suggs Mill Pond Lake (Permit Only Areas)

All impoundments are flooded for late season hunts.

White Oak River Game Land

Hunt Area: White Oak Impoundment (Permit Area after Oct. 1)

This impoundment is flooded and offers hunting opportunities.

PIEDMONT REGION

R. Wayne Bailey-Caswell Game Land

Hunt Areas: Brumley and Caswell Impoundments (Permit Only Areas)

In a joint project with Ducks Unlimited, the Caswell Impoundment has undergone extensive repairs and will not be flooded this year in order to allow the rebuilt dike to stabilize. The Brumley Impoundment is currently flooded with ample huntable water. Call (336) 694-9272 prior to scheduled hunt dates for updated information.

Butner Falls of the Neuse Game Land:

Hunt Areas: Flat River, Butner Depot, Beaverdam, and Bluff Impoundments (Permit only)

All impoundments currently have sufficient water to support hunting opportunities. Flat River is not at full pool, but does contain huntable water. Pumping will continue in Flat

River until desired water levels are achieved, provided that source water remains available.

Hunt Areas: Brickhouse Rd, Patterson Rd., (Green Tree Impoundments) and Knapp of Reeds (Open Impoundment) – non permit areas

Although continued rainfall events may result in some limited huntable area, conditions in Knapp of Reeds will remain poor due to the recent development of a severe leak in the water control structure. Note that although no permit is required to hunt Knapp of Reeds, this is a posted impoundment and hunting is prohibited after 1:00 pm.

Brickhouse and Patterson Road impoundments look good for the Dec. 19 segment with adequate water conditions.

Call (919) 620-0089 for updated information on condition of Butner-Falls impoundments.

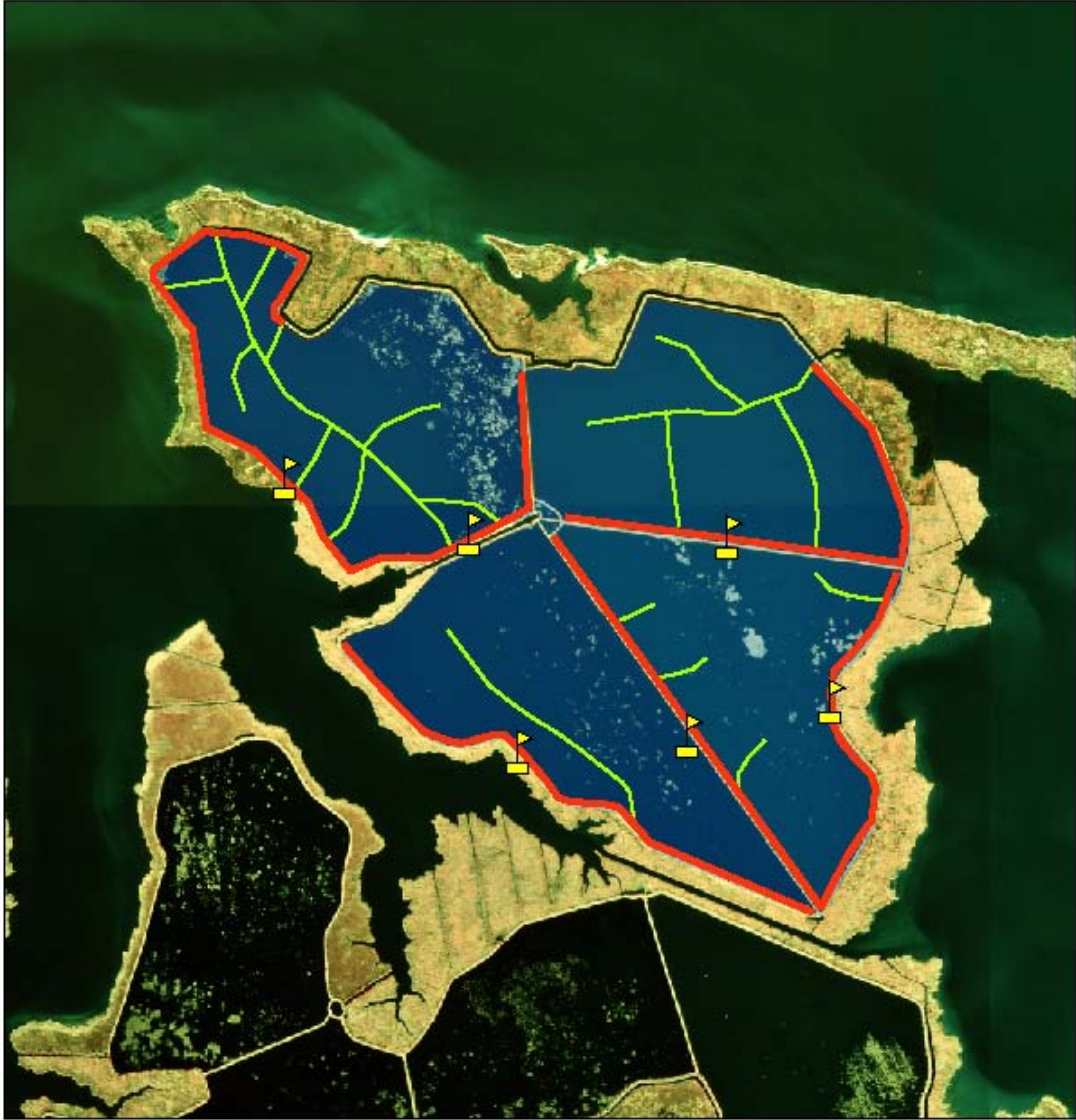
Jordan Game Land:

Hunt Areas: #2, #3, #5, and #7 (Green Tree Impoundments)

All impoundments scheduled for flooding have adequate water conditions at present and are in good shape for the Dec. 19 segment.

Call (919) 620-0089 for updated information on condition of Jordan impoundments.

Pamlico Point Impoundment - Goose Creek Game Land Ditch Location Map



Goose Creek Game Land
Pamlico Point Impd
Drainage Ditches

- Legend**
-  Hunter_Bridges
 -  Rim Ditch
 -  Drainage Ditch



0 550 1,100 2,200 Feet