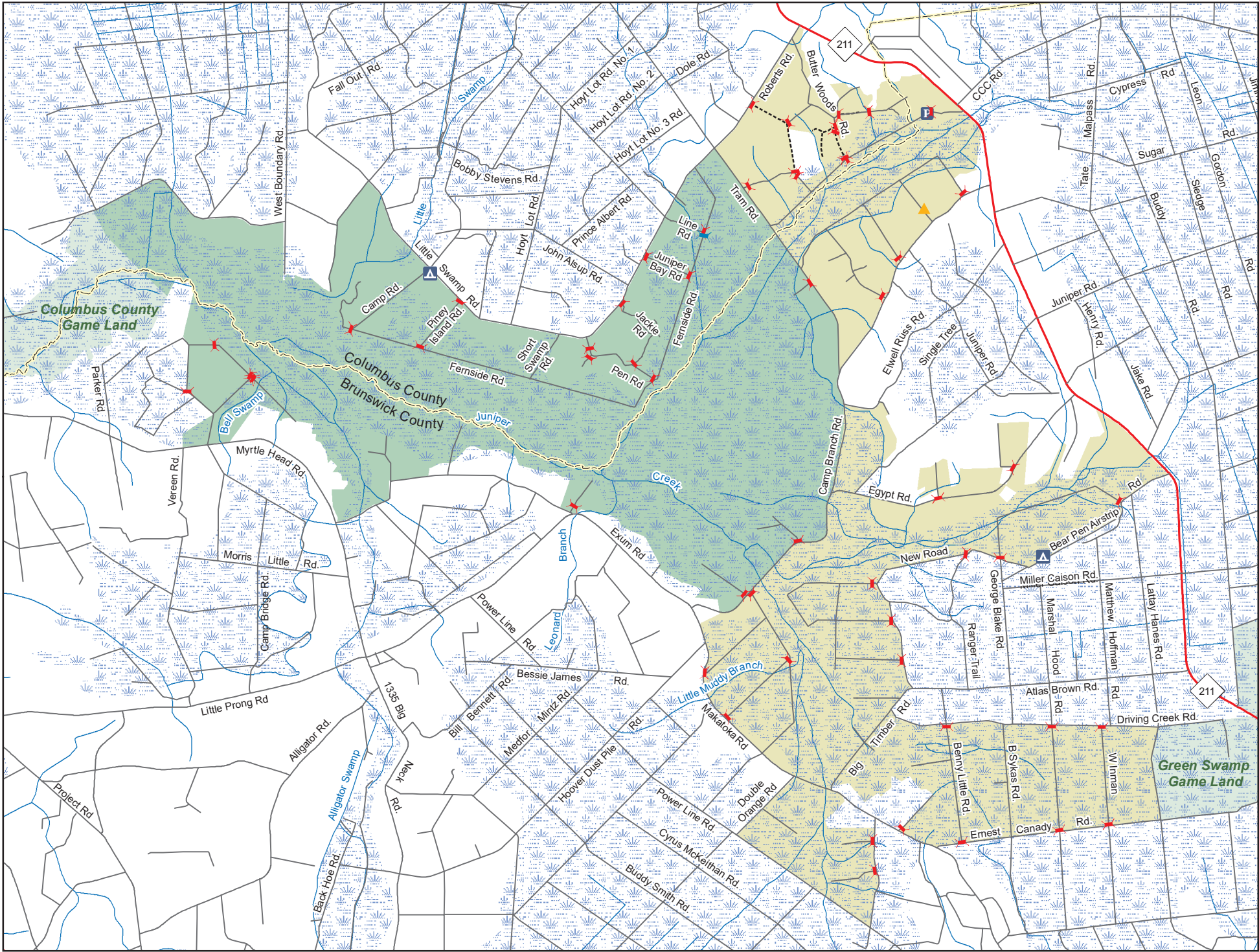


JUNIPER CREEK GAME LAND
 N.C. Wildlife Resources Commission
 Brunswick and Columbus Counties (20,370 acres)



- Designated Camping Area
- Permanently Closed Gate
- Public Parking
- Secondary Road
- Black Bear Sanctuary
- Game Land
- Disabled Sportsman Blind
- Gate Closed During Turkey Season
- Trail

