

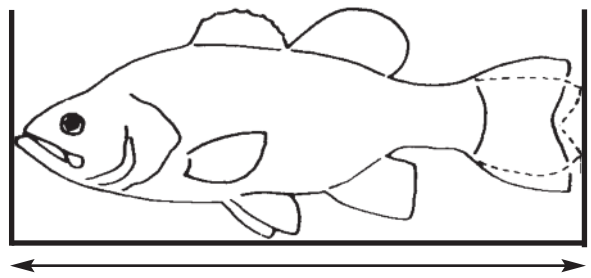
General Information Inland, Joint and Coastal Fishing Waters. Both the Wildlife Resources Commission and the Division of Marine Fisheries have licensing, management and regulatory authority in certain waters along the coast of North Carolina. These waters are designated as inland, joint and coastal waters. The Wildlife Resources Commission has jurisdiction in inland waters, and the Division of Marine Fisheries has jurisdiction (except that pertaining to inland game fishes) in coastal waters. Both agencies have licensing and regulatory authority in joint waters.

The boundaries between inland, joint and coastal fishing waters are prominently marked with metal signs posted adjacent to the affected waters. A list of these waters, with their boundaries indicated, is available from the Wildlife Resources Commission, at ncwildlife.org (see Fishing—Where to Fish—Coastal, Joint and Inland Fishing Waters Designations in N.C.), or by calling 919-707-0220. Maps are also available at ncwildlife.org/fishingmap.

SPECIAL REGULATIONS FOR JOINT FISHING WATERS

- It is unlawful to possess striped bass or Bodie bass (striped bass hybrid) less than 18 inches in length.
 - It is unlawful to possess striped bass or Bodie bass (striped bass hybrid) between 22 and 27 inches in length in the joint waters of the Central-Southern Striped Bass Management Area.
 - It is unlawful to possess striped bass or Bodie bass (striped bass hybrid) from May 1 through Sept. 30 in the joint waters of the Central-Southern and Albemarle Sound Striped Bass Management Areas.
 - It is unlawful to possess striped bass or Bodie bass (striped bass hybrid) in the joint waters of the Cape Fear River.
 - It is unlawful to possess more than one daily creel limit of striped bass or Bodie bass (striped bass hybrid), in combination, per person per day, regardless of the number of management areas fished.
 - It is unlawful to possess striped bass or Bodie bass (striped bass hybrid) that are not in agreement with size and creel limits of the waters being fished, regardless of other management areas that may have been fished that day.
 - It is unlawful to net fish for striped bass or Bodie bass (striped bass hybrid) in joint waters except as authorized by rules of the Marine Fisheries Commission.
 - It is unlawful to use seines, gill nets or trawl nets in the Lake Mattamuskeet canals.
 - It is unlawful to use any net, net stakes, or electrical fishing device within 800 feet downstream of the dam at Lock No. 1 on the Cape Fear River.
 - It is unlawful to possess more than 10 American or hickory shad in aggregate, per person per day, taken by hook-and-line. For the current daily creel limits for American shad, see portal.ncdenr.org/web/mf/recreational-fishing-size-and-bag-limits.
- Otherwise, in joint fishing waters, commercial fishing and licensing—including commercial trotlines—are subject to the coastal fishing laws and regulations; inland game fish and hook-and-line licensing—exclusive of commercial trotlines—are subject to the inland fishing laws and regulations.

How to Measure Inland Game Fish The harvest of several game fishes is regulated by length limits. Fish length is determined by measuring along a straight line (in other words, not along the curvature of the body) the distance from the tip of the closed mouth to the tip of the compressed caudal (tail) fin.



INLAND GAME FISH

The following fishes are designated as inland game fish:

- Black bass (largemouth, smallmouth and spotted)
- Crappie (white and black)
- Sunfish
 - Bluegill
 - Redbreast sunfish (robin)
 - Redear sunfish (shellcracker)
 - Pumpkinseed
 - Warmouth
 - Green sunfish
 - Roanoke bass
 - Rock bass
 - Flier
 - All other species of the family *Centrarchidae*
- Mountain trout (including but not limited to brook, brown and rainbow trout)
- Kokanee salmon
- Walleye
- Sauger
- Pickerel, chain (jack) and redbfin
- Muskellunge
- White bass, in inland waters
- Bodie bass (striped bass hybrid), in inland waters
- Striped bass, in inland waters
- Shad (American and hickory), in inland waters
- White perch, in inland waters
- Yellow perch, in inland waters
- Spotted sea trout, in inland waters
- Flounder, in inland waters
- Red drum (channel bass, red fish and puppy drum), in inland waters

GENERAL REGULATIONS FOR INLAND GAME FISH

Purchase and Sale

- The purchase and sale of inland game fish are unlawful, except from and by licensed commercial trout ponds and fish propagators.

Manner of Taking

- Inland game fish may be taken only with a hook and line.
- Landing nets may be used to land fishes caught on a hook and line.
- It is unlawful to snag fish by pulling or jerking a device equipped with one or more hooks through the water for the purpose of impaling fish.
- American and hickory shad may be taken with bow nets from March 1 through April 30 in those counties and waters with open seasons for the use of bow nets (see “Seasons and Waters” pages 30–35) and are subject to daily creel limits (see page 20).
- In the inland waters of the Roanoke River upstream of the U.S. 258 bridge, only a single barbless hook or a lure with a single barbless hook may be used from April 1 to June 30. “Barbless” means that the hook either does not have a barb or that the barb is bent down.
- White perch may be taken when captured in a cast net being used to collect nongame fishes in all impounded waters west

of Interstate 95 and in the Tar River Reservoir (Nash Co.) **except in waters in and west of Haywood, Buncombe and Rutherford counties where it is unlawful to possess, transport or release live White Perch.**

Possession and Use of Game Fish

1. It is unlawful to take, in any one day, more than the daily creel limit of any inland game fish having a specified creel limit.
2. It is unlawful to possess more than the daily creel limit while fishing, boating or afield; or to possess at any place more than three days' creel limit.
3. It is unlawful to possess fish whose size, creel or season restrictions are not in compliance with the regulations on the waters being fished.
4. It is unlawful, while fishing, to change the appearance of fish subject to size limits or daily creel limits or remove the head and/or tail from fish that are regulated by a size limit so that they may not be measured and/or identified.
5. It is unlawful to destroy unnecessarily any inland game fish

taken from public fishing waters.

6. Inland game fish may be used as bait if they are legally taken and are in agreement with the size and creel limits of the waters being fished and other regulations.

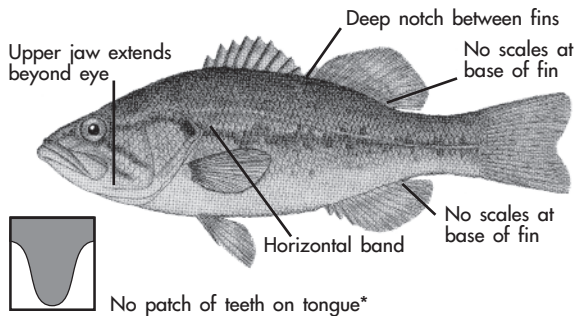
Seasons There are no closed seasons on inland game fishes with the following exceptions:

1. In Hatchery Supported Trout Waters, where the season for all fishes is closed and fishing is prohibited from March 1–April 1, 2017. This closed season for fishing does not apply to power reservoirs or municipal water supply reservoirs.
2. On U.S. Fish and Wildlife Service National Wildlife Refuges, where federal regulations apply. See pages 44–46 for a list of refuges and contact information.
3. On the Roanoke River, where the striped bass season is closed from May 1–end of February from the Roanoke Rapids Dam downstream to the mouth of the river at Albemarle Sound, unless changed by proclamation of the Executive Director, Wildlife Resources Commission.

BASS IDENTIFICATION CHART

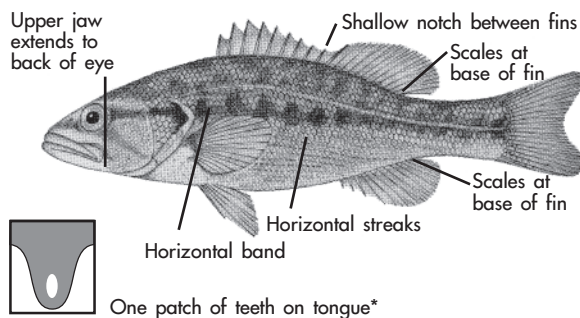
Largemouth Bass

Found statewide



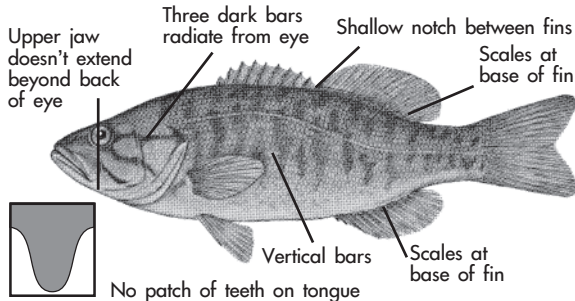
Spotted Bass

Found west of I-77 and in the Cape Fear River Basin



Smallmouth Bass

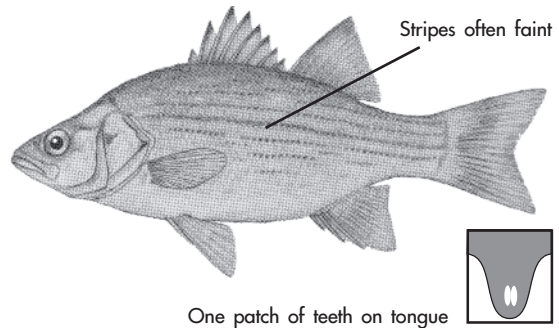
Found west of I-77 and in the Uwharrie and Dan rivers



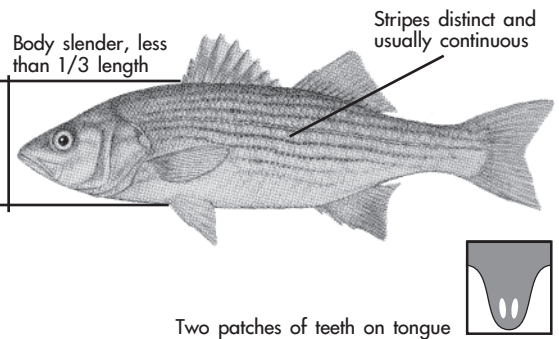
*Largemouth bass X spotted bass hybrids may have a small patch of teeth on the tongue.

MORONE IDENTIFICATION CHART

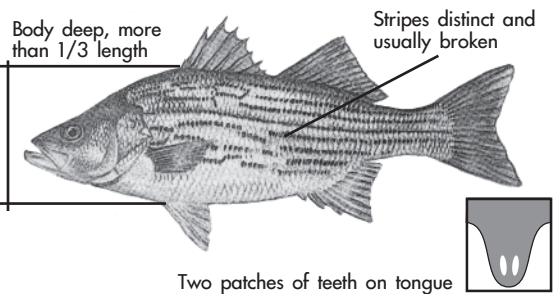
White Bass



Striped Bass



Bodie Bass (striped bass hybrid)



Additional information on these and other species can be found at ncwildlife.org/fishing

4. In the Central-Southern Striped Bass Management Area where it is unlawful to possess striped bass or Bodie bass (striped bass hybrid) from May 1 – Sept. 30.
5. In Cape Fear River and tributaries below Buckhorn Dam where possession of striped bass and Bodie bass (striped bass hybrid) is prohibited.
6. In Sutton Lake, where possession of largemouth bass is prohibited from Dec. 1 – March 31.
7. Fishing is prohibited from Feb. 15 – April 15 in the Linville River from the mouth, as marked at Lake James, upstream to the N.C. 126 bridge.
8. Seasons and size and creel limits for spotted sea trout, flounder, and red drum are the same as those recreational limits established by the Division of Marine Fisheries in adjacent joint and coastal fishing waters. For current limits, see portal.ncdenr.org/web/mf/recreational-fishing-size-and-bag-limits or call 252-726-7021 or 800-682-2632.

TROT LINES, SET-HOOKS AND JUG-HOOKS

- A trotline is a fishing device consisting of a horizontal common line having multiple hooks attached.
 - A set-hook is a fishing device consisting of a single line having no more than three hooks that is attached at one end only to a stationary object.
 - A jug-hook is a fishing device consisting of a single line having no more than three hooks that is attached at one end only to a float.
 - Trotlines, set-hooks and jug-hooks may be fished under any license that authorizes basic fishing privileges.
 - It is unlawful to use live bait with trotlines, set-hooks or jug-hooks.
- Trotlines must be set parallel to the nearest shore in all public waters, where their use is authorized.
 - Each trotline, set-hook and jug-hook shall have attached the user’s name and address or the user’s WRC customer number legibly inscribed.
 - Each trotline shall be conspicuously marked at each end, and each set-hook shall be conspicuously marked at one end with a prominent flag or floating object.
 - Metal cans and glass containers cannot be used as markers.
 - The number of jug-hooks that may be fished is limited to 70 per boat.
 - Trotlines, set-hooks and jug-hooks must be fished daily, and all fish must be removed daily.
 - Trotlines, set-hooks and jug-hooks without bait or not properly labeled may be removed from the water by wildlife enforcement officers.
 - Blue crabs may be taken recreationally with a single line with multiple baits without hooks (see restrictions under “Taking Nongame Fish, Crustaceans, and Mollusks for Bait or Personal Consumption” on page 29).

Exceptions

- No trotlines, set-hooks or jug-hooks may be used in the impounded waters of Sandhills Game Land.
- No trotlines, set-hooks or jug-hooks may be used in Public Mountain Trout Waters, except impounded waters of power reservoirs and municipal water supply reservoirs open to the public for fishing.
- In Lake Waccamaw, it is unlawful to use trotlines, set-hooks or jug-hooks from May 1–Sept. 30.

REGULATIONS FOR WARMWATER GAME FISH

State waters are classified as: inland, joint and coastal (see “General Information” on page 16). These state waters are collectively referred to as public fishing waters. Certain fishes, including largemouth bass, crappie and mountain trout are designated inland game fish and under the jurisdiction of the Wildlife Resources Commission in all public waters; whereas, some species, including striped bass, white and yellow perch, flounder and red drum, are designated as inland game fish only in inland waters (see list on page 16).

LOCATION

SIZE LIMIT

DAILY CREEL LIMIT*

| LOCATION | SIZE LIMIT | DAILY CREEL LIMIT* |
|---|---|--|
| Black bass (including largemouth, smallmouth and spotted) | | |
| -All public waters except those listed below | 14-inch minimum, except 2 may be less than 14 inches | 5 in combination, including only 2 less than 14 inches |
| - Roanoke River downstream of Roanoke Rapids Dam - Currituck, Roanoke, Croatan, and Albemarle Sounds and all their tributaries - Chowan River and its tributaries (including the Meherrin River) - Yeopim River - Pasquotank River - Perquimans River - North River - Northwest River - Scuppernon River - Alligator River (including the Alligator/Pungo Canal east of the NC Hwy 264/45 bridge) - Lake Mattamuskeet and associated canals (Hyde Co.) - Pungo Lake (Washington and Hyde counties) - New Lake (Hyde Co.) - Lake Raleigh (Wake Co.) | 14-inch minimum | 5 in combination |
| - Sutton Lake (New Hanover Co.) | 14-inch minimum <u>Dec. 1–March 31:</u> No bass may be possessed. | 5 in combination <u>Dec. 1–March 31:</u> No bass may be possessed. |
| - Buckhorn Reservoir (Wilson and Nash counties) - Cane Creek Lake (Union Co.) | 16-inch minimum | 5 in combination |
| - Lake Thom-A-Lex (Davidson Co.) | 18-inch minimum | 5 in combination |
| - Shearon Harris Reservoir - Lake Hampton (Yadkin County) | 14-inch minimum, except that 2 may be less than 14 inches and no bass between 16–20 inches may be possessed | 5 in combination, including only 2 less than 14 inches |

*Please note: “In combination” means the total number for all species combined.

| LOCATION | SIZE LIMIT | DAILY CREEL LIMIT* |
|--|---|--|
| Black bass (including largemouth, smallmouth and spotted) | | |
| - Lake Phelps | 14-inch minimum and no bass between 16–20 inches may be possessed | 5 in combination |
| - New River (Alleghany Co. portion downstream of Fields Dam in Grayson Co., Va.) | No minimum size and no bass between 14–22 inches may be possessed | 5 in combination, including only 1 bass greater than 22 inches |
| -Randleman Reservoir (Randolph and Guilford counties) | 14-inch minimum, except that 2 may be less than 14 inches and only one may be greater than 20 inches | 5 in combination, including only 2 less than 14 inches and only 1 greater than 20 inches |
| - Lake Cammack (Alamance Co.) - Lake Holt (Granville Co.) | No minimum size limit, and only 2 bass may be greater than 14 inches | 10 in combination, including only 2 greater than 14 inches |
| - Lake Santeetlah (Graham Co.) | No minimum size limit, and only 5 bass may be greater than 14 inches | No daily creel limit for bass less than 14 inches, and only 5 bass may be greater than 14 inches |
| - Lake Chatuge (Clay County) | 12-inch minimum size limit only for Largemouth Bass. No minimum size limit for Smallmouth and Spotted Bass. | 10 in combination |
| Striped bass and Bodie bass (striped bass hybrid) (Inland impoundments and tributaries) | | |
| -Impounded inland waters and their tributaries except those listed below | 20-inch minimum | 4 in combination |
| - John H. Kerr Reservoir - Dan River in Caswell Co., N.C., downstream of Danville, Va. | Oct. 1–May 31: 24-inch minimum June 1–Sept. 30: No minimum size limit | Oct. 1–May 31: 2 in combination June 1–Sept. 30: 4 in combination |
| - Lake Gaston - Roanoke Rapids Reservoir | Oct. 1–May 31: 20-inch minimum June 1–Sept. 30: No minimum size limit | 4 in combination |
| - Lake Norman, Arrowhead Lake (Anson Co.), High Rock Pond (Caswell Co.), Moss Lake, Mountain Island Reservoir, Oak Hollow Lake, Lake Thom-A-Lex, Lake Townsend, and Salem Lake | 16-inch minimum | 4 in combination |
| - Lake Chatuge (Clay County) | No minimum size limit, and only 2 fish may be greater than 22 inches | 15 in combination, including only 2 greater than 22 inches |
| Striped bass and Bodie bass (striped bass hybrid) (Coastal rivers and impoundments) | | |
| Roanoke River Striped Bass Management Area (including Roanoke, Cashie, Middle and Eastmost rivers and their tributaries) - Roanoke Rapids Dam downstream to mouth of the river at Albemarle Sound | Season - March 1–April 30 (unless closed or extended by proclamation): 18-inch minimum, no fish between 22-27 inches | Season - March 1–April 30 (unless closed or extended by proclamation): 2 in combination including only 1 greater than 27 inches |
| Albemarle Sound Striped Bass Management Area (including Roanoke Sound, Croatan Sound, Albemarle Sound, Currituck Sound and Chowan, Yeopim, Perquimans, Little, Pasquotank, North, Alligator and Scuppernong rivers and their tributaries) | Established by Division of Marine Fisheries | Established by Division of Marine Fisheries |
| Central-Southern Striped Bass Management Area, inland and joint waters including: - Tar-Pamlico River and tributaries from Rocky Mount Mill Dam downstream to N & S Railroad Bridge at Washington - Neuse River and tributaries from Milburnie Dam downstream to Southern Railroad Bridge at New Bern - Pungo River - All other unlisted inland and joint waters of coastal rivers and their tributaries, except Cape Fear River and tributaries | Season - Oct. 1–April 30 18-inch minimum and no fish between 22-27 inches | Season- Oct. 1–April 30 2 in combination |
| Central-Southern Striped Bass Management Area, coastal waters including: - Tar-Pamlico River downstream of the N & S Railroad Bridge at Washington, including Pamlico Sound and tributaries designated as coastal waters - Neuse River downstream of Southern Railroad Bridge at New Bern, including Pamlico Sound and tributaries designated as coastal waters - All other unlisted coastal waters | Established by Division of Marine Fisheries | Established by Division of Marine Fisheries |

| LOCATION | SIZE LIMIT | DAILY CREEL LIMIT |
|--|--|--|
| Striped bass and Bodie bass (striped bass hybrid) <i>(Coastal rivers and impoundments)</i> | | |
| Central-Southern Striped Bass Management Area, inland, joint and coastal waters of: - Cape Fear River and tributaries downstream of Buckhorn Dam | No striped bass may be possessed | No striped bass may be possessed |
| - Pee Dee River and tributaries downstream of Blewett Falls Dam - Lake Mattamuskeet | 18-inch minimum | 3 in combination |
| Sunfish (except species listed below) | | |
| - All public fishing waters except those listed below | None | None |
| In the following waters and their tributaries: - Roanoke River downstream of Roanoke Rapids Dam - Tar River downstream of Tar River Reservoir Dam - Neuse River downstream of Falls Lake Dam - Haw River downstream of Jordan Lake Dam - Deep River downstream of Lockville Dam - Cape Fear River - Waccamaw River downstream of Lake Waccamaw Dam, Lumber River, including Drowning Creek -All public waters east of Interstate 95, except Tar River Reservoir (Nash Co.) | None | 30 in combination, including no more than 12 redbreast sunfish |
| Crappie (black and white) | | |
| - All public fishing waters except those listed below | None | None |
| In the following waters and their tributaries: - Tar River downstream of Tar River Reservoir Dam - Neuse River downstream of Falls Lake Dam - Haw River downstream of Jordan Lake Dam - Deep River downstream of Lockville Dam - Cape Fear River - Waccamaw River downstream of Lake Waccamaw Dam - Lumber River, including Drowning Creek - All other public waters east of Interstate 95, except Tar River Reservoir (Nash Co.), Sutton Lake (New Hanover Co.) and Roanoke River (see below) - Badin Lake, Falls Lake (Stanly and Montgomery counties), Lake Tillery, and Blewett Falls Lake - Pee Dee River from Blewett Falls Lake Dam to the South Carolina state line - Lake Norman, Lake Hyco, Lake Ramseur, and Cane Creek Lake - All public waters west of Interstate 77 - Lake Hampton (Yadkin County) | 8-inch minimum | 20 in combination |
| - B. Everett Jordan Reservoir - Roanoke River (downstream of Roanoke Rapids Dam), Cashie, Middle and Eastmost rivers and their tributaries | 10-inch minimum | 20 in combination |
| - Buckhorn Reservoir (Wilson and Nash counties) | None | 20 in combination |
| - Lake Chatuge (Clay County) | None | 30 in combination |
| Rock bass and Roanoke bass | | |
| - All other public fishing waters except those listed below | None | None |
| - All public waters east of Interstate 77 | 8-inch minimum | 2 in combination |
| White bass | | |
| -All inland fishing waters | None | 25 |
| American and hickory shad | | |
| - All inland fishing waters except those listed below | None | 10 in combination |
| - Roanoke River downstream of Roanoke Rapids Dam to the U.S. 258 bridge near Scotland Neck - Neuse River and its tributaries | None | 10 in combination, including no more than 1 American shad |
| - Cape Fear River and its tributaries | None | 10 in combination, including no more than 5 American shad |
| - Lake Gaston - Roanoke Rapids Reservoir - John H. Kerr Reservoir | No American shad may be possessed | No American shad may be possessed |
| Spotted sea trout, flounder, and red drum - All inland fishing waters | Same as those recreational limits established by Division of Marine Fisheries in adjacent joint and coastal fishing waters. For current limits, visit portal.ncdenr.org/web/mf/recreational-fishing-size-and-bag-limits or call 252-726-7021 or 800-682-2632. | |

| LOCATION | SIZE LIMIT | DAILY CREEL LIMIT |
|---|-----------------|-------------------|
| Walleye | | |
| - All other public fishing waters except those listed below | None | 8 |
| - Lake James and tributaries | 15-inch minimum | 8 |
| - Linville River upstream from N.C. 126 bridge | None | 4 |
| - Lake Gaston | 18-inch minimum | 5 |
| - Roanoke Rapids Reservoir | | |
| - John H. Kerr Reservoir | | |
| Muskellunge | | |
| - All public fishing waters | 42-inch minimum | 1 |
| Sauger | | |
| - All public fishing waters | 15-inch minimum | 8 |
| Kokanee salmon | | |
| - All public fishing waters | None | 7 |
| All other warmwater game fishes | | |
| - All public fishing waters | None | None |

REGULATIONS FOR MOUNTAIN TROUT

| LOCATION/SEASON | SIZE LIMIT | DAILY CREEL LIMIT | LURES/BAIT RESTRICTIONS* |
|--|--|-------------------|--|
| HATCHERY SUPPORTED TROUT WATERS | | | |
| Aug. 1, 2016 – Feb. 28, 2017 7 a.m. April 1, 2017 – July 31, 2017 -All Hatchery Supported Trout Waters not listed below | None | 7 | None |
| March 1, 2017 – March 31, 2017 **No fishing allowed -All Hatchery Supported Trout Waters not listed below | ** | ** | ** |
| No closed season -Linville River and tributaries within Linville Gorge Wilderness Area -Power reservoirs and municipal water supply reservoirs | None | 7 | None |
| WILD TROUT WATERS | | | |
| No closed season | 7 inches | 4 | Artificial lures with a single hook. |
| WILD TROUT NATURAL BAIT WATERS | | | |
| No closed season | 7 inches | 4 | Artificial lures or natural bait with a single hook. No live fish allowed as bait. |
| DELAYED HARVEST TROUT WATERS | | | |
| Oct. 1, 2016 – June 2, 2017 **No trout may be possessed **No fishing allowed from ½ hour after sunset on June 2, 2017, to 6 a.m. on June 3, 2017 | ** | ** | Artificial lures with a single hook. Natural bait may not be possessed. ** |
| Aug. 1, 2016 – Sept. 30, 2016 June 3, 2017 – July 31, 2017 (Note: youth under 16 years old only fishing from 6 a.m. until noon on June 3, 2017) | None | 7 | None |
| CATCH AND RELEASE / ARTIFICIAL LURES ONLY TROUT WATERS | | | |
| No closed season **No trout may be possessed | ** | ** | Artificial lures with a single hook. Natural bait may not be possessed. |
| CATCH AND RELEASE / ARTIFICIAL FLIES ONLY TROUT WATERS | | | |
| No closed season **No trout may be possessed | ** | ** | Artificial flies with a single hook. Natural bait may not be possessed. |
| SPECIAL REGULATION TROUT WATERS | | | |
| No closed season -Catawba River from Muddy Creek to Morganton water intake dam | Only one fish may be greater than 14 inches long | 7 | None |
| UNDESIGNATED TROUT WATERS | | | |
| No closed season | None | 7 | None |

*See page 22 for a definition of artificial lure and natural bait

STATE FISH HATCHERIES

- It is unlawful to fish at any time in the waters or on the property of any state fish hatchery, including Bones Creek from the Lake Rim Dam to the U.S. 401 Bypass (Raeford Road), except McKinney Lake Reservoir at McKinney Lake State Fish Hatchery.

Fishing on Game Lands

- A game lands license is not required to fish in any waters on game lands.
- All game lands are open to public fishing with the following exceptions:
 - Re-stocked ponds when posted against fishing.
 - Grogan Creek in Transylvania County, which serves as a fish hatchery and water supply.
 - Hunting Creek Swamp Waterfowl Refuge in Davie County.
 - Private ponds where fishing may be prohibited by property owners.
- In all game lands ponds, forked-tail catfish may be taken only by hook and line, and the daily creel limit is six catfish for all species combined.
- The use of special fishing devices, including crab pots, is prohibited in designated waterfowl impoundments located on game lands. Exception: Nongame fish may be taken year-round with archery equipment (see page 42) from waterfowl impoundments located entirely on game lands other than the impounded waters on the Sandhills Game Land and Public Mountain Trout Waters.
- Blue crabs may be taken recreationally from designated waterfowl impoundments on game lands with hand-held lines with single baits and a collapsible crab trap with a maximum opening of 18 inches. The limit is 50 crabs per person, per day or 100 per vessel per day with a minimum carapace width of five inches (point to point).

REGULATIONS FOR MOUNTAIN TROUT

Brook, brown and rainbow trout require cold, clean water and are therefore generally restricted to mountain streams and lakes. Those mountain waters that support trout and are open to public fishing are designated as “Public Mountain Trout Waters” by the Wildlife Resources Commission and are managed for public trout fishing. A significant amount of trout fishing opportunities in western North Carolina are located on private property. These landowners have generously allowed for public access for fishing. Please respect their property. Your cooperation is needed to protect fishing opportunities for future generations. The Commission conspicuously marks Public Mountain Trout Waters with regulation signs that indicate locations for public access. When anglers encounter “posted against trespass” signs along these designated sections on private lands, they should respect the property owner’s rights and choose another location along that stream to fish. Maps of trout water and their classifications may be viewed at ncwildlife.org/fishing/trout.

Fishing in Public Mountain Trout Waters

- Fishing is limited to hook and line only.
- An **artificial lure** is defined as a fishing lure that neither contains nor has been treated with any substance that attracts fish by the sense of taste or smell.
- **Natural bait** is defined as any living or dead organism (plant or animal), or parts thereof, or prepared substances designed to attract fish by the sense of taste or smell.
- It is unlawful to take fish bait or bait fish from Public Mountain Trout Waters.
- It is unlawful to possess natural bait while fishing Wild Trout and Catch and Release waters, unless those waters are also specifically classified for use of natural bait.

- Dropper flies may be used when fishing any Public Mountain Trout Waters.
- It is unlawful to fish with more than one line per person, except on power reservoirs and municipal water supply reservoirs.
- Fishing is not allowed in Hatchery Supported Trout Waters during the closed season except in the Linville River and tributaries within Linville Gorge Wilderness Area and on power reservoirs and municipal water supply reservoirs designated as trout waters.
- Non-trout species may be harvested from Delayed Harvest Trout Waters during the catch-and-release only trout season under applicable size and creel limits.
- It is unlawful to place hatchery-reared fish into Wild Trout Waters or move wild fish from one stream to another on game lands without prior written authorization.
- Information and regulations about trout fishing on game lands are listed on page 28.

Trout Fishing in Undesignated Waters

Some waters that are not designated as Public Mountain Trout Waters contain mountain trout. When fishing in undesignated waters, there is no size limit or bait restriction, and the creel limit is seven trout per day. A trout fishing license is not required to fish undesignated waters, and there is no closed season.

Public Mountain Trout Waters

Public Mountain Trout Waters are classified for management purposes as either “Hatchery Supported Trout Waters” or “Wild Trout Waters.” Hatchery Supported Trout Waters must be stocked periodically with trout to sustain angling. Wild Trout Waters are high-quality waters that sustain trout populations by natural reproduction. Some Public Mountain Trout Waters are specially regulated to meet specific management objectives. These are further classified as follows:

- “Catch and Release/Artificial Flies Only Trout Waters”
- “Catch and Release/Artificial Lures Only Trout Waters”
- “Delayed Harvest Trout Waters”
- “Special Regulation Trout Waters”
- “Wild Trout/Natural Bait Waters”

Some of these public trout waters are also classified as Mountain Heritage Trout Waters and are identified on page 28.

Catch and Release/Artificial Flies Only Trout Waters

These waters and their tributaries, except as noted, may be fished only with artificial flies having one single hook. No trout may be harvested or possessed while fishing these streams. These streams are marked with red-and-gold signs.

Catch and Release/Artificial Lures Only Trout Waters

These waters and their tributaries, except as noted, may be fished only with artificial lures having one single hook. No trout may be harvested or possessed while fishing these streams. These streams are marked with purple-and-gold signs.

Delayed Harvest Trout Waters

Delayed Harvest Trout Waters, excluding tributaries except as noted, may be fished only with artificial lures with one single hook, no natural bait may be possessed, and no trout may be harvested or possessed while fishing these waters between Oct. 1, 2016 and 30 minutes after sunset on June 2, 2017. These waters are closed to fishing between 30 minutes after sunset on June 2 and 6 a.m. on June 3. At 6 a.m. on June 3, 2017, these waters open to fishing for youths under 16 years old under Hatchery Supported Trout Waters regulations—no bait restriction, no minimum length limit and seven-trout-per-day creel limit. At 12 p.m. on June 3, 2017, these waters open for all anglers under Hatchery Supported Trout Waters regulations. These waters are marked with black-and-white signs.

Hatchery Supported Trout Waters

In Hatchery Supported Trout Waters there is no size limit or bait restriction, and the creel limit is seven trout per day. These waters are marked with green-and-white signs.

Special Regulation Trout Waters

These portions of Public Mountain Trout Waters, excluding tributaries except as noted, are subject to watercourse-specific, special regulations. These streams are marked with white-and-red signs.

Wild Trout Waters

In all Wild Trout Waters, the minimum length limit is seven inches and the creel limit is four trout per day. Only artificial lures with one single hook may be used. All Public Mountain Trout Waters located on game lands are Wild Trout Waters unless classified and posted otherwise. Wild Trout Waters are marked with blue-and-gold signs.

Wild Trout/Natural Bait Waters

These waters and their tributaries, except as noted, may be fished with artificial lures or natural bait, except live fish. Lures and natural baits are restricted to one single hook. The minimum length limit is seven inches, and the daily creel limit is four trout. These streams are marked with brown-and-gold signs.

ALLEGHANY COUNTY

Delayed Harvest Trout Waters

Little River (S.R. 1133 bridge to 275 yards downstream of the intersection of S.R. 1128 and S.R. 1129 [marked by a sign on each bank])

Hatchery Supported Trout Waters

Big Pine Creek
 Bledsoe Creek
 Brush Creek (N.C. 21 bridge to confluence with Little River, except where posted against trespassing)
 Cranberry Creek
 (Big) Glade Creek
 Little River (275 yards downstream of the intersection of S.R. 1128 and S.R. 1129 [marked by a sign on each bank] to McCann Dam)

Meadow Fork
 Pine Swamp Creek
 Piney Fork
 Prathers Creek

Wild Trout Waters

Big Sandy Creek (portion on Stone Mountain State Park)
 Stone Mountain Creek (portion on Stone Mountain State Park)

ASHE COUNTY

Catch and Release/Artificial Lures Only Trout Waters

Big Horse Creek (Virginia state line to Mud Creek at S.R. 1363, excluding tributaries)

Delayed Harvest Trout Waters

Big Horse Creek (S.R. 1324 bridge to North Fork New River)
 Helton Creek (Virginia state line to New River)
 South Fork New River (upstream end of Todd Island to the S.R. 1351 bridge)

Trout Lake

Hatchery Supported Trout Waters

Beaver Creek (N.C. 221 to South Fork New River)
 Big Horse Creek (Mud Creek at S.R. 1363 to S.R. 1324 bridge)
 Big Laurel Creek (S.R. 1315 bridge to confluence with North Fork New River)
 Buffalo Creek (S.R. 1133 bridge to N.C. 194-88 bridge)
 Cranberry Creek (Alleghany Co. line to South Fork New River)
 Nathans Creek

North Fork New River (Watauga Co. line to Sharp Dam)
 Old Fields Creek (N.C. 221 to South Fork New River)
 Peak Creek (headwaters to Trout Lake, except Blue Ridge Parkway waters)
 Roan Creek
 Three Top Creek

AVERY COUNTY

Catch and Release/Artificial Flies Only Trout Waters

Elk River (portion on Lees-McRae College property, excluding the millpond)
 Lost Cove Creek (game land portion, excluding Gragg Prong and Rockhouse Creek)

Catch and Release/Artificial Lures Only Trout Waters

Wilson Creek (game land portion)

Hatchery Supported Trout Waters

Boyde Coffey Lake
 Elk River (S.R. 1305 crossing immediately upstream of Big Falls to the Tennessee state line)
 Linville River (Land Harbor line [below dam] to the Blue Ridge Parkway boundary line, except where posted against trespassing)
 Milltimber Creek
 North Toe River —upper (Watauga St. to Roby Shoemaker Wetlands and Family Recreational Park, except where posted against trespassing)
 North Toe River—lower (S.R. 1164 to Mitchell Co. line, except where posted against trespassing)

Squirrel Creek

Wildcat Lake

Wild Trout Waters

Birchfield Creek
 Cow Camp Creek
 Cranberry Creek (headwaters to U.S. 19E/N.C. 194 bridge)
 Gragg Prong
 Horse Creek
 Kentucky Creek
 North Harper Creek
 Plumtree Creek
 Roaring Creek
 Rockhouse Creek
 Shawneehaw Creek (portion adjacent to Banner Elk Greenway)
 South Harper Creek
 Webb Prong

BUNCOMBE COUNTY

Catch and Release/Artificial Lures Only Trout Waters

Carter Creek (game land portion)

Hatchery Supported Trout Waters

Bent Creek (headwaters to N.C. Arboretum boundary line)
 Cane Creek (headwaters to S.R. 3138 bridge)
 Corner Rock Creek (Little Andy Creek to confluence with Walker Branch)
 Dillingham Creek (Corner Rock Creek to Ivy Creek)
 Ivy Creek (Ivy River) (Dillingham Creek to U.S. 19-23 bridge)
 Lake Powhatan
 Reems Creek (Sugar Camp Fork to U.S. 19-23 bridge, except where posted against trespassing)
 Rich Branch (downstream from the confluence with Rocky Branch)
 Stony Creek
 Swannanoa River (S.R. 2702 bridge near Ridgecrest to Wood Avenue bridge [intersection of N.C. 81 and U.S. 74A in Asheville], except where posted against trespassing)

BURKE COUNTY

Catch and Release/Artificial Lures Only Trout Waters

Henry Fork (portion on South Mountains State Park)

Delayed Harvest Trout Waters

Jacob Fork (Shinny Creek to lower South Mountains State Park boundary)

Hatchery Supported Trout Waters

Carroll Creek (portion on game lands above S.R. 1405)

Henry Fork (lower South Mountains State Park line downstream to S.R. 1919 at Ivy Creek)

Linville River (portion within Linville Gorge Wilderness Area (LGWA) and portion below Lake James powerhouse from upstream bridge on S.R. 1223 to Muddy Creek) There is no closed season within LGWA.

Special Regulation Trout Waters

Catawba River (Muddy Creek to City of Morganton water intake dam). The creel limit is seven trout per day; only one of which may be greater than 14 inches. No bait restrictions. No closed season.

Wild Trout Waters

All waters located on South Mountains State Park except Clear Creek Reservoir, the main stream of Jacob Fork between the mouth of Shinny Creek and the lower park boundary, and Henry Fork and its tributaries

Nettle Branch (game land portion)

CALDWELL COUNTY

Delayed Harvest Trout Waters

Wilson Creek (game land portion below Lost Cove Creek to Phillips Branch)

Hatchery Supported Trout Waters

Boone Fork Pond

Buffalo Creek (mouth of Joes Creek to McCloud Branch)

Joes Creek (first falls upstream of S.R. 1574 to confluence with Buffalo Creek)

Wilson Creek (Phillips Branch to Brown Mountain Beach Dam, except where posted against trespassing)

Yadkin River (Happy Valley Ruritan Community Park to S.R. 1515)

Wild Trout Waters

Buffalo Creek (Watauga Co. line to Long Ridge Branch including tributaries on game lands)

Joes Creek (Watauga Co. line to first falls upstream of the end of S.R. 1574)

Rockhouse Creek

CHEROKEE COUNTY

Hatchery Supported Trout Waters

Davis Creek (confluence of Bald and Dockery creeks to Hanging Dog Creek)

Hyatt Creek (Big Dam Branch to Valley River)

Junaluska Creek (Ashturn Creek to Valley River)

Shuler Creek (Joe Brown Hwy. [S.R. 1325] bridge to Tennessee line)

Valley River (S.R. 1359 to U.S. 19 Business bridge in Murphy)

Wild Trout/Natural Bait Waters

Bald Creek (game land portions)

Dockery Creek (game land portions)

North Shoal Creek (game land portions)

CLAY COUNTY

Delayed Harvest Trout Waters

Fires Creek (USFS Road 340A to the foot bridge in the USFS Fires Creek Picnic Area)

Hatchery Supported Trout Waters

Buck Creek (game land portion downstream of U.S. 64 bridge)

Fires Creek (foot bridge in the USFS Fires Creek Picnic Area to S.R. 1300)

Tusquitee Creek (Compass Creek to lower S.R. 1300 bridge)

GRAHAM COUNTY

Delayed Harvest Trout Waters

(Big) Snowbird Creek (USFS footbridge at the old railroad junction to USFS Road 2579)

Hatchery Supported Trout Waters

Calderwood Reservoir (Cheoah Dam to Tennessee state line)
Cheoah Reservoir

Panther Creek (confluence of Stand Creek and Rock Creek to Lake Fontana)

Santeetlah Creek (Johns Branch to Lake Santeetlah)

(Big) Snowbird Creek (USFS Road 2579 to S.R. 1127 bridge)

Stecoah Creek (upper game land boundary to Lake Fontana)

Tulula Creek (S.R. 1201 to lower bridge on S.R. 1275)

West Buffalo Creek

Yellow Creek (Lake Santeetlah Hydropower Pipeline to Cheoah River)

Wild Trout Waters

Little Buffalo Creek

South Fork Squally Creek

Squally Creek

Wild Trout/Natural Bait Waters

Deep Creek

Franks Creek

Long Creek (game land portion)

HAYWOOD COUNTY

Delayed Harvest Trout Waters

West Fork Pigeon River (Queen Creek to the first game land boundary upstream of Lake Logan)

Hatchery Supported Trout Waters

Cold Springs Creek (Fall Branch to Pigeon River)

Jonathan Creek (upstream S.R. 1302 bridge to Pigeon River, except where posted against trespass)

Pigeon River (Stamey Cove Branch to upstream U.S. 19-23 bridge)

Richland Creek (Russ Avenue [U.S. 276] bridge to U.S. 19 bridge)

West Fork Pigeon River (Tom Creek to Queen Creek, including portions on game lands, except Middle Prong)

Wild Trout/Natural Bait Waters

Hemphill Creek

Hurricane Creek (including portions of tributaries on game lands)

HENDERSON COUNTY

Delayed Harvest Trout Waters

North Fork Mills River (Hendersonville watershed dam to the lower game land boundary)

Hatchery Supported Trout Waters

(Rocky) Broad River (end of S.R. 1611 to Rutherford Co. line)

Cane Creek (railroad bridge upstream of S.R. 1551 bridge to U.S. 25 bridge)

Clear Creek (Laurel Fork to S.R. 1582)

Green River (Lake Summit powerhouse to game land boundary)

(Big) Hungry River (S.R. 1885 to Green River)

JACKSON COUNTY

Catch and Release/Artificial Lures Only Trout Waters

Flat Creek

Tuckasegee River (above the Clark property)

Delayed Harvest Trout Waters

Tuckasegee River (downstream N.C. 107 bridge to the falls located 275 yards upstream of the U.S. 23-441 bridge [marked by a sign on each bank])

Hatchery Supported Trout Waters

- Balsam Lake
- Bear Creek Lake
- Cedar Cliff Lake
- Cullowhee Creek (Tilley Creek to Tuckasegee River)
- Dark Ridge Creek (Jones Creek to Scott Creek)
- Greens Creek (Greens Creek Baptist Church on S.R. 1370 to Savannah Creek)
- Savannah Creek (Shell Branch to Cagle Branch)
- Scott Creek (Dark Ridge Creek to Tuckasegee River, except where posted against trespassing)
- Tanasee Creek Lake
- Tuckasegee River—upper (John Brown Branch to the downstream N.C. 107 bridge)
- Tuckasegee River—lower (falls located 275 yards upstream of U.S. 23-441 bridge [marked by a sign on each bank] to S.R. 1534 bridge at Wilmot)
- Wolf Creek Lake

Wild Trout Waters

- Gage Creek
- North Fork Scott Creek
- Tanasee Creek
- Whitewater River (downstream from Silver Run Creek to South Carolina state line)
- Wolf Creek (except Balsam Lake and Wolf Creek Lake)

Wild Trout/Natural Bait Waters

- Buff Creek
- Chattooga River (S.R. 1100 bridge to South Carolina state line)
- Lower Fowler Creek (game land portion)
- Scotsman Creek (game land portion)

MACON COUNTY

Delayed Harvest Trout Waters

- Nantahala River (Whiteoak Creek to Nantahala hydropower discharge canal)

Hatchery Supported Trout Waters

- Burningtown Creek (Left Prong to Little Tennessee River)
- Cartoogechaye Creek (downstream U.S. 64 bridge to Little Tennessee River)
- Cliffside Lake
- Cullasaja River (Sequoyah Dam to U.S. 64 bridge near junction of S.R. 1672)
- Nantahala River—upper (Dicks Creek to Whiteoak Creek)
- Nantahala River—lower (Nantahala hydropower discharge canal to Swain Co. line)
- Queens Creek Lake

Wild Trout/Natural Bait Waters

- Chattooga River (S.R. 1100 bridge to South Carolina state line)
- Jarrett Creek (game land portion)
- Kimsey Creek
- Overflow Creek (game land portion)
- Park Creek
- Tellico Creek (game land portion)
- Turtle Pond Creek (game land portion)

MADISON COUNTY

Delayed Harvest Trout Waters

- Big Laurel Creek (N.C. 208 bridge to the U.S. 25-70 bridge)
- Shelton Laurel Creek (N.C. 208 bridge at Belva to the confluence with Big Laurel Creek)
- Spring Creek (N.C. 209 bridge at Hot Springs city limits to iron bridge at end of Andrews Avenue)

Hatchery Supported Trout Waters

- Big Laurel Creek (Mars Hill watershed boundary to the S.R. 1318 [Big Laurel Road] bridge downstream of Bearpen Branch)
- Big Pine Creek (S.R. 1151 bridge to French Broad River)
- Little Ivy Creek (confluence of Middle Fork and Paint Fork at Beech Glen to confluence with Ivy Creek at Forks of Ivy)
- Max Patch Pond
- Meadow Fork Creek (S.R. 1165 to Spring Creek)
- Puncheon Fork (Hampton Creek to Big Laurel Creek)
- Roaring Fork (Fall Branch to Meadow Fork)
- Shelton Laurel Creek (confluence of Big Creek and Mill Creek to N.C. 208 bridge at Belva)
- Shut-in Creek
- Spillcorn Creek
- Spring Creek (junction of N.C. 209 and N.C. 63 to USFS Road 223)
- West Fork Shut-in Creek (lower game land boundary to confluence with East Fork Shut-in Creek)

Wild Trout/Natural Bait Waters

- Big Creek (headwaters to the lower game land boundary, including tributaries)

MCDOWELL COUNTY

Catch and Release/Artificial Lures Only Trout Waters

- Newberry Creek (game land portion)

Delayed Harvest Trout Waters

- Catawba River (portion adjacent to Marion Greenway)
- Curtis Creek (game land portion downstream of the USFS boundary at Deep Branch)
- Mill Creek (U.S. 70 bridge to I-40 bridge)

Hatchery Supported Trout Waters

- Armstrong Creek (Cato Holler lower line downstream to upper Greenlee line)
- Catawba River (Catawba Falls Campground to Old Fort Recreation Park)
- Little Buck Creek (game land portion)
- Mill Creek (upper railroad bridge to U.S. 70 bridge, except where posted against trespassing)
- North Fork Catawba River (headwaters to North Cove School at S.R. 1569 bridge)

MITCHELL COUNTY

Delayed Harvest Trout Waters

- Cane Creek (N.C. 226 bridge to S.R. 1189 bridge)
- North Toe River (U.S. 19E bridge to N.C. 226 bridge)

Hatchery Supported Trout Waters

- Big Rock Creek (headwaters to N.C. 226 bridge at S.R. 1307 intersection)
- Cane Creek (S.R. 1219 to N.C. 226 bridge)
- East Fork Grassy Creek
- Grassy Creek (East Fork Grassy Creek to mouth)
- Little Rock Creek (Green Creek bridge to Big Rock Creek, except where posted against trespassing)
- North Toe River (Avery Co. line to S.R. 1121 bridge)

Wild Trout Waters

- Green Creek (above Green Creek bridge, except where posted against trespassing)
- Little Rock Creek (above Green Creek, including all tributaries, except where posted against trespassing)
- Wiles Creek (game land boundary to mouth)

POLK COUNTY

Delayed Harvest Trout Waters

- Green River (Fishtop Falls Access Area to the confluence with Cove Creek)

Hatchery Supported Trout Waters

Green River (Mouth of Cove Creek to the natural gas pipeline crossing)

North Pacolet River (Joels Creek to N.C. 108 bridge)

RUTHERFORD COUNTY

Hatchery Supported Trout Waters

(Rocky) Broad River (Henderson Co. line to U.S. 64/74 bridge, except where posted against trespassing)

STOKES COUNTY

Hatchery Supported Trout Waters

Dan River (Virginia state line downstream to a point 200 yards below the end of S.R. 1421)

SURRY COUNTY

Delayed Harvest Trout Waters

Ararat River (portion adjacent to Ararat River Greenway)

Mitchell River (0.6 mile upstream of the end of S.R. 1333 to the S.R. 1330 bridge below Kapps Mill Dam)

Hatchery Supported Trout Waters

Ararat River (S.R. 1727 bridge downstream to the N.C. 103 bridge)

Big Elkin Creek (Dam 440 yards upstream of N.C. 268 bridge to a point 265 yards downstream of N.C. 268 [marked by a sign on each bank])

Fisher River (Cooper Creek) (Virginia state line to Interstate 77 bridge)

Little Fisher River (Virginia state line to N.C. 89 bridge)

Lovills Creek (U.S. 52 Business bridge to Ararat River)

Pauls Creek (Virginia state line to 0.3 miles below S.R. 1625 bridge)

SWAIN COUNTY

Delayed Harvest Trout Waters

Tuckasegee River (U.S. 19 bridge to Slope Street bridge)

Hatchery Supported Trout Waters

Alarka Creek (game land boundary to Fontana Reservoir)

Calderwood Reservoir (Cheoah Dam to Tennessee state line)

Cheoah Reservoir

Connelly Creek (Camp Branch to Tuckasegee River)

Deep Creek (Great Smoky Mountains National Park boundary line to Tuckasegee River)

Nantahala River (Macon Co. line to existing Fontana Reservoir water level)

TRANSYLVANIA COUNTY

Catch and Release/Artificial Flies Only Trout Waters

Davidson River (headwaters to Avery Creek, excluding Avery Creek, Looking Glass Creek and Grogan Creek)

Delayed Harvest Trout Waters

East Fork French Broad River (Glady Fork to French Broad River)

Little River (confluence of Lake Dense to 100 yards downstream of Hooker Falls)

Hatchery Supported Trout Waters

Davidson River (Avery Creek to lower USFS boundary line)

French Broad River (confluence of North Fork French Broad River and West Fork French Broad River to the Island Ford Rd. [S.R. 1110] Access Area)

Middle Fork French Broad River (upstream U.S. 178 bridge to French Broad River)

West Fork French Broad River (Camp Cove Branch to confluence with North Fork French Broad)

Wild Trout Waters

All waters located on Gorges State Park

Whitewater River (downstream from Silver Run Creek to South Carolina state line)

Wild Trout/Natural Bait Waters

North Fork French Broad River (game land portion downstream of S.R. 1326)

Thompson River (S.R. 1152 to South Carolina state line, except where posted against trespassing)

WATAUGA COUNTY

Catch and Release/Artificial Lures Only Trout Waters

Dugger Creek (portions on Blue Ridge Mountain Club including tributaries)

Laurel Creek (portions on Blue Ridge Mountain Club and Powder Horn Mountain Development, including tributaries)

Pond Creek (headwaters to Locust Ridge Road bridge, excluding the pond adjacent to Coffee Lake)

Delayed Harvest Trout Waters

Lake Coffey

Watauga River – upper (S.R. 1114 bridge to N.C. 194 bridge at Valle Crucis)

Watauga River – lower (S.R. 1103 bridge to confluence with Laurel Creek)

Hatchery Supported Trout Waters

Beaverdam Creek (confluence of Beaverdam Creek and Little Beaverdam Creek to an unnamed tributary adjacent to the intersection of S.R. 1201 and S.R. 1203)

Beech Creek

Buckeye Creek (Buckeye Creek Reservoir dam to Grassy Gap Creek)

Buckeye Creek Reservoir

Cove Creek (S.R. 1233 bridge at Zionville to S.R. 1233 bridge at Amantha)

Dutch Creek (second bridge on S.R. 1134 to mouth)

Elk Creek (S.R. 1510 bridge at Triplett to Wilkes Co. line, except where posted against trespassing)

Laurel Creek (S.R. 1123 bridge at S.R. 1157 intersection to Watauga River)

Meat Camp Creek (S.R. 1340 bridge at S.R. 1384 intersection to N.C. 194)

Middle Fork New River (Lake Chetola dam to South Fork New River)

Norris Fork Creek

South Fork New River (canoe launch 70 yards upstream of U.S. 421 bridge to lower boundary of Brookshire Park)

Stony Fork (S.R. 1500 bridge at S.R. 1505 intersection to Wilkes Co. line)

Wild Trout Waters

Dutch Creek (headwaters to second bridge on S.R. 1134)

Howard Creek

Maine Branch (headwaters to North Fork New River)

North Fork New River (from confluence with Maine and Mine branches to Ashe Co. line)

Watauga River (Avery Co. line to S.R. 1580 bridge)

Winkler Creek (lower bridge on S.R. 1549 to confluence with South Fork New River)

WILKES COUNTY

Catch and Release/Artificial Lures Only Trout Waters

Dugger Creek (portion on Blue Ridge Mountain Club including tributaries)

Harris Creek (portion on Stone Mountain State Park)

Delayed Harvest Trout Waters

East Prong Roaring River (Bullhead Creek downstream to Stone Mountain State Park lower boundary)

Elk Creek—upper (Watauga Co. line to lower boundary of Blue Ridge Mountain Club)

Elk Creek—lower (portion on Leatherwood Mountains Development)

Reddies River (Town of North Wilkesboro water intake dam to confluence with Yadkin River)

Stone Mountain Creek (from falls at Alleghany Co. line to confluence with East Prong Roaring River and Bullhead Creek)

Hatchery Supported Trout Waters

Bell Branch Pond

Boundary Line Pond

Cub Creek (0.5 miles upstream of S.R. 2460 bridge to S.R. 1001 bridge)

Darnell Creek (North Prong Reddies River) (downstream ford on S.R. 1569 to confluence with North Fork Reddies River)

East Prong Roaring River (Stone Mountain State Park lower boundary to **S.R. 1002 bridge**)

Fall Creek (S.R. 1300 bridge to confluence with South Prong Lewis Fork, except where posted against trespassing)

Middle Fork Reddies River (Clear Prong) (headwaters to bridge on S.R. 1580)

Middle Prong Roaring River (headwaters to second bridge on S.R. 1736)

North Fork Reddies River (Vannoy Creek) (headwaters to Union School bridge on S.R. 1559)

Pike Creek

Pike Creek Pond

South Fork Reddies River (S.R. 1355 bridge to confluence with Middle Fork Reddies River)

South Prong Lewis Fork (Fall Creek to S.R. 1155 bridge)

Wild Trout Waters

Big Sandy Creek (portion on Stone Mountain State Park)

Garden Creek (portion on Stone Mountain State Park)

Widow Creek (portion on Stone Mountain State Park)

YANCEY COUNTY

Catch and Release/Artificial Flies Only Trout Waters

South Toe River (headwaters to Upper Creek, including tributaries)

Upper Creek (headwaters to South Toe River, including tributaries)

Delayed Harvest Trout Waters

Cane River (Blackberry Ridge Road to downstream boundary of Cane River County Park)

Hatchery Supported Trout Waters

Bald Mountain Creek (except where posted against trespassing)

Cane River (Bee Branch [S.R. 1110] to Bowlens Creek)

Price Creek (junction of S.R. 1120 and S.R. 1121 to Indian Creek)

South Toe River (Clear Creek to lower boundary line of Yancey Co. recreation park, except where posted against trespassing)

Wild Trout Waters

Cattail Creek (bridge at Mountain Farm Community Road to N.C. 197 bridge)

Licksillet Creek

Middle Creek (game land boundary to mouth)

Mountain Heritage Trout Waters Some Public Mountain Trout

Waters running through or adjacent to certain cities or towns may be further classified as Mountain Heritage Trout Waters. Any license that provides trout fishing privileges may be used to fish on Mountain Heritage Trout Waters. Resident and nonresident anglers may instead purchase a three-day Mountain Heritage Trout Waters license valid only on Mountain Heritage Trout Waters. This license is \$5 for both residents and nonresidents and can be purchased online at ncwildlife.org or by calling 888-248-6834, 8 a.m.–5 p.m., Monday – Friday. The following waters are classified as Mountain Heritage Trout Waters and listed by county, Mountain Heritage Trout City name and regulation type. The boundaries for Mountain Heritage Trout Waters are marked with signs posted conspicuously along the watercourses.

Ashe County

Lansing: Big Horse Creek (S.R. 1324 bridge to North Fork New River) [Delayed Harvest Trout Waters regulations apply]

Todd: South Fork New River (upstream end of Todd Island to S.R. 1351 bridge) [Delayed Harvest Trout Waters regulations apply]

Avery County

Newland: North Toe River (Watauga St. bridge to Roby Shomaker Wetlands and Family Recreation Park) [Hatchery Supported Trout Waters regulations apply]

Haywood County

Maggie Valley: Jonathan Creek (upstream S.R. 1302 bridge to S.R. 1309 bridge) [Hatchery Supported Trout Waters regulations apply]

Waynesville: Richland Creek (Russ Avenue bridge to U.S. 19 bridge) [Hatchery Supported Trout Waters regulations apply]

Jackson County

Dillsboro: Scott Creek (Hometown Place Road to Tuckasegee River) [Hatchery Supported Trout Waters regulations apply]

Tuckasegee River (Falls located 275 yards upstream of U.S. 23-441 bridge to Scott Creek) [Hatchery Supported Trout Waters regulations apply]

Tuckasegee River (Savannah Creek to falls located 275 yards upstream of U.S. 23-441 bridge) [Delayed Harvest Trout Waters regulations apply]

Sylva: Scott Creek (Hospital Road to Hometown Place Road) [Hatchery Supported Trout Waters regulations apply]

Webster: Tuckasegee River (downstream N.C. 107 bridge to Savannah Creek) [Delayed Harvest Trout Waters regulations apply]

Madison County

Hot Springs: Spring Creek (N.C. 209 bridge at Hot Springs city limits to iron bridge at end of Andrews Avenue) [Delayed Harvest Trout Waters regulations apply]

ATTENTION TROUT ANGLERS



Did you know **Eastern Hellbenders** (a.k.a. “water dogs”) are harmless, nonvenomous, giant, crayfish-eating, aquatic salamanders that are indicators of good water quality and healthy streams? Did you know that thriving, diverse fish populations and healthy hellbender populations go hand-in-hand?

The Wildlife Resources Commission wants to conserve this amazing mountain creature and needs your help. If you accidentally catch a hellbender on hook and line, please immediately release the animal at the spot of capture by carefully removing the hook or cutting the line as close as possible to the hook.

Water dogs need your help!

Let us know where you found a hellbender by calling 919-707-0050 so we can map their distribution. THANKS!

McDowell County

Old Fort: Mill Creek (U.S. 70 bridge to the I-40 bridge)
[Delayed Harvest Trout Waters regulations apply]

Mitchell County

Bakersville: Cane Creek (N.C. 226 bridge to S.R. 1189 bridge)
[Delayed Harvest Trout Waters regulations apply]

Spruce Pine: North Toe River (U.S. 19E bridge to N.C. 226 bridge) [Delayed Harvest Trout Waters regulations apply]

Yancey County

Burnsville: South Toe River (property boundaries of the Yancey County Toe River Campground) [Hatchery Supported Trout Waters regulations apply]

Trout Fishing on Game Lands

- All waters on the game lands listed below are Public Mountain Trout Waters and are classified as Wild Trout Waters, except as noted:
 - Cold Mountain Game Land in Haywood Co.
 - Dupont State Forest Game Land in Henderson and Transylvania counties, except Little River from 100 yards downstream of Hooker Falls downstream to the Dupont State Forest boundary, Lake Imaging, Lake Dense, Lake Alfred, Lake Julia, and Fawn Lake.
 - Green River Game Land in Henderson and Polk counties, excluding Green River downstream of the natural gas pipeline crossing.
 - Nantahala National Forest Game Land in Cherokee, Clay, Graham, Jackson, Macon, Swain and Transylvania counties, except Cheoah River downstream of Santeetlah Reservoir and Cherokee Lake.
 - Pisgah National Forest Game Land in Avery, Buncombe, Burke, Caldwell, Haywood, Henderson, Madison, McDowell, Mitchell, Transylvania and Yancey counties, except Grogan Creek, North Fork Catawba River downstream of the mouth of Armstrong Creek, Big Laurel Creek downstream from the U.S. 25-70 bridge to the French Broad River, Mill Ridge Pond, Nolichucky River, Pigeon River downstream of Waterville Reservoir to the Tennessee state line, and Spring Creek below USFS Road 223.
 - Pond Mountain Game Land in Ashe Co.
 - South Mountains Game Land in Cleveland and Rutherford counties.
 - Three Top Mountain Game Land in Ashe Co.
 - Thurmond Chatham Game Land in Wilkes Co.
 - Toxaway Game Land in Transylvania Co.

Trout Fishing on the Blue Ridge Parkway Angling opportunities on the Blue Ridge Parkway are managed by the National Park Service which establishes fishing regulations for parkway waters. The Wildlife Resources Commission aides with management by stocking catchable-size trout into the following waters:

| County | Water |
|-----------|------------------------------|
| Alleghany | Brush Creek |
| Alleghany | Big Pine Creek |
| Alleghany | Meadow Fork |
| Avery | Linville River |
| Buncombe | Swannanoa River |
| Watauga | Middle Fork of the New River |
| Watauga | Price Lake |

Specific fishing regulations are displayed on signs located near fishing access points, and all persons age 16 or older must possess a valid North Carolina or Virginia fishing license to fish parkway

waters. In addition, the parkway provides wild and catch-and-release trout fishing, as well as, angling for bass and sunfish. For more information on fishing in parkway waters, contact: Blue Ridge Parkway, 199 Hemphill Knob Road, Asheville, NC 28803. Telephone: 828-271-4779, or at their website: <http://www.nps.gov/blri/parkmgmt/lawsandpolicies.htm>.

Trout Fishing on North Carolina State Parks Fishing in waters within a state park is limited to park operating hours. Additional park information may be obtained at ncparks.gov or by contacting the following park offices:

- South Mountains State Park 828-433-4772
- Stone Mountain State Park 336-957-8185
- Gorges State Park 828-966-9099

NONGAME FISH

Any fish not classified as a game fish is considered a nongame fish when found in inland fishing waters and includes shellfish and crustaceans.

Sale of Nongame Fish

- Nongame fish caught on hook and line, grabbling and by special fishing devices may be sold, subject to the following restrictions:
 1. Bowfin may not be sold.
 2. Blueback herring and alewife taken by any method in inland waters may not be sold, except for those fish less than six inches in length that are taken from Kerr Reservoir (Granville, Vance, and Warren counties).
 3. American eel less than nine inches in length taken from inland fishing waters may not be possessed or sold.
 4. In **Lake Tillery, Lake Wylie, Mountain Island Reservoir, Lake Norman and Badin Lake** the daily possession limit for blue catfish greater than 32 inches in length is one.
 5. Blue crabs taken from inland fishing waters with a line containing multiple baits may not be sold.
 6. Seasons and size and creel limits for gray trout are the same as those recreational limits established by Division of Marine Fisheries in adjacent joint and coastal fishing waters. For current limits, see portal.ncdenr.org/web/mf/recreational-fishing-size-and-bag-limits or call 252-726-7021 or 800-682-2632.
 7. Those listed under “Miscellaneous Prohibitions” on page 35.
 8. A special fishing device license is required when taking nongame fish with special fishing devices and also subject to restrictions listed under “Special Fishing Devices,” on page 30, “Seasons and Waters” on pages 31–35, and “Fishing on Game Lands” on page 22.
- The sale of commercially raised nongame fish is regulated by the NC Department of Agriculture and Consumer Services.

Manner of Taking Nongame Fish

- Nongame fish may be taken by hook and line or by grabbling; no fish may be taken by snagging. Special devices may be used to take nongame fish with proper licenses (see “Special Fishing Devices,” page 30) in those counties and waters with open seasons (see “Seasons and Waters” pages 31–35).
- Nongame fishes may be taken year-round with archery equipment (see page 42) under any license that authorizes basic hunting or inland fishing privileges in waterfowl impoundments located entirely on game lands and in all inland fishing waters other than the impounded waters on the Sandhills Game Land, Public Mountain Trout Waters, and reservoirs with restrictions on taking grass carp listed on page 29.
- For special rules governing trotlines, see “Trotlines, Set-hooks and Jug-hooks” (page 18).

- Crab pots may not be used in inland fishing waters or in designated waterfowl impoundments located on game lands, except that persons owning property adjacent to the inland fishing waters of coastal rivers and their tributaries may set two crab pots attached to their property and a special device license is not required.
- Blue crabs may be taken recreationally with a single line with multiple baits without hooks (see restrictions under “Taking Nongame Fish, Crustaceans, and Mollusks for Bait or Personal Consumption” below).

Hook-and-Line Regulations for Nongame Fish

- * Season: Year-round
- * Minimum size limit: None
- * Daily creel limit: None

The following exceptions apply:

- The daily creel limit on channel, white and blue catfish (forked-tail catfish) is six fish in all game lands ponds and in the following waters:

| | |
|-------------|--|
| Alamance | Cedarrock Park Pond |
| Alexander | Ellendale Community Center Pond |
| Buncombe | Azalea Park Pond Charles Owen Park Pond Lake Julian Lake Tomahawk |
| Cabarrus | Frank Liske Park Pond TN Spencer Park Pond |
| Cumberland | Lake Rim* |
| Edgecombe | Etheridge Pond* Indian Lake Newbold Pond* |
| Forsyth | CG Hill Memorial Park Pond Kernersville Lake Village Point Lake Winston Park Pond* |
| Gaston | Dallas Park Pond George Poston Park Pond |
| Granville | Lake Devin |
| Guilford | Bur-Mill Park Ponds Country Park Pond Hagan Stone Park Ponds Keeley Park Ponds Oka T Hester Pond |
| Lee | San-Lee Park Ponds |
| Lenoir | Neuseway Nature Center Pond |
| Mecklenburg | Freedom Park Pond* Hornet’s Nest Park Pond McAlpine Lake Robbins Park Ponds Squirrel Lake |
| Moore | Lake Luke Marion |
| Orange | Anderson Community Park Pond Lake Michael |
| Pitt | River Park North Ponds |
| Polk | Laughter Pond |
| Richmond | Ellerbe Community Lake Hamlet City Lake Hinson Lake |
| Rowan | Dan Nicholas Park Pond Salisbury Community Park Lake |
| Stanly | Albemarle City Lake |
| Surry | Big Elkin Creek Tumbling Rock Reservoir |

Union
Wake

Dogwood Park Pond
Bass Lake
Bond Park Pond
Harris Lake County Park Pond
Pine Lake in Apex Community Park
Lake Raleigh*
Shelley Lake
Simpkins Pond in Lake Wheeler Park
Yadkin County Park Pond

*Use of gasoline engines to power boats is prohibited.

- In Lake Tillery, Lake Wylie, Mountain Island Reservoir, Lake Norman and Badin Lake the daily creel limit for blue catfish greater than 32 inches in length is one.
- There is no open season for sturgeon. Any sturgeon caught must be immediately released.
- No more than 25 American eel, none of which may be less than nine inches in length, may be taken or possessed, regardless of origin, while boating on or fishing in inland fishing waters.
- Blue crabs taken by hook and line from inland fishing waters or in designated waterfowl impoundments located on game lands must have a minimum carapace width of five inches (point to point). The daily limit is 50 crabs per person or 100 per vessel per day.
- No herring (alewife and blueback) greater than six inches in length may be taken or possessed, regardless of origin, while boating on or fishing in inland fishing waters of coastal rivers and their tributaries up to the first impoundment of the main course on the river (listed below), the Lumber River including Drowning Creek, and in all other inland fishing waters east of Interstate 95.
 - Roanoke River – Roanoke Rapids Dam
 - Tar River – Rocky Mount Mill Dam
 - Neuse River – Milburnie Dam
 - Cape Fear River – Buckhorn Dam
 - Waccamaw River – Lake Waccamaw Dam
 - Pee-Dee River – Blewett Falls Dam
- Grass carp may not be possessed on Lake James, Lookout Shoals Lake, Lake Norman, Mountain Island Reservoir, Lake Wylie, and John H. Kerr Reservoir, except that one fish per day may be taken and possessed with archery equipment (see page 42).
- Grass carp may not be possessed or taken with archery equipment (see page 42) on Lake Gaston and Roanoke Rapids Reservoir except for scientific study by permit issued by the Wildlife Resources Commission (S.L. 2009-261).
- Seasons and size and creel limits for gray trout are the same as those recreational limits established by Division of Marine Fisheries in adjacent joint and coastal fishing waters. For current limits, see portal.ncdenr.org/web/mf/recreational-fishing-size-and-bag-limits or call 252-726-7021 or 800-682-2632.
- In Public Mountain Trout Waters, the season shall be the same as the trout-fishing season.
- Information and regulations about fishing on game lands are listed on page 22.

Taking Nongame Fish, Crustaceans, and Mollusks for Bait or Personal Consumption

- Nongame fishes, crustaceans (crayfish and blue crabs), and mollusks taken for bait or personal consumption may not be sold.
- Nongame fishes, crustaceans, and mollusks may be taken for bait or personal consumption only with the equipment listed below, and any valid license that provides basic inland fishing privileges is only required. (See regulations for taking and sale of

nongame fish on pages 28–29 and other nongame regulations on page 42 for more information).

1. A dip net not greater than six feet across.
 2. A seine not greater than 12 feet in length with a bar mesh measure of not more than 1/4 inch, except in Lake Waccamaw any length seine may be used to collect bait fishes.
 3. A cast net.
 4. A bow net in those counties and waters with open seasons (see “Seasons and Waters” pages 31-35).
 5. **Dip nets used in conjunction with a licensed hand-crank electrofisher where authorized by local law.**
 6. Minnow traps under immediate control and attendance of the operator and not exceeding 12 inches in diameter, with funnel openings not exceeding one inch in diameter.
 7. A gig except in Public Mountain Trout Waters.
 8. Traps (no more than three) in those counties and waters with open seasons (see “Seasons and Waters” pages 31-35).
 9. Eel pots (no more than two).
 10. A spear gun in those counties and waters with open seasons (see “Seasons and Waters” page 30-34).
 11. Hand-held lines with single baits attached to each.
 12. A single, multiple bait line for taking crabs not to exceed 100 feet in length that is under the immediate control and attendance of the user and is limited to one line per person and no more than one line per vessel. The line is required to be marked on each end with a solid float no less than five inches in diameter and bearing legible and indelible identification of the user’s name and address.
 13. A collapsible crab trap with the largest opening not greater than 18 inches and which, by design, collapses at all times when in the water, except when being retrieved or lowered to the bottom.
- The daily creel limit is 200 nongame fish, crayfish, and mollusks, in combination, subject to the following restrictions:
 1. No more than 25 American eel, none of which may be less than nine inches in length, may be taken or possessed, regardless of origin, while boating on or fishing in inland fishing waters.
 2. No herring (alewife and blueback) greater than six inches in length may be taken or possessed, regardless of origin, while boating on or fishing in inland fishing waters of coastal rivers and their tributaries up to the first impoundment dam on the main course of the river, the Lumber River including Drowning Creek, and all other inland fishing waters east of Interstate 95.
 3. No more than 50 crabs per person, per day or 100 per vessel, per day with a minimum carapace width of five inches (point to point) from inland fishing waters or in designated waterfowl impoundments located on game lands.
 4. In **Lake Tillery, Lake Wylie, Mountain Island Reservoir, Lake Norman and Badin Lake** the daily creel limit for blue catfish greater than 32 inches in length is one.
 5. Seasons and size and creel limits for gray trout are the same as those recreational limits established by Division of Marine Fisheries in adjacent joint and coastal fishing waters. For current limits, see portal.ncdenr.org/web/mf/recreational-fishing-size-and-bag-limits or call 252-726-7021 or 800-682-2632.
 - Any fish taken for bait purposes are included in the daily possession limit for that species (where such a limit is specified).
 - Nongame fish may not be taken for bait from Bear Creek and Rocky River, Chatham County; Fork Creek, Randolph County; Deep River below Coleridge Dam, Randolph County; and those

portions of Deep River in Moore, Chatham and Lee counties.

- Game fish incidentally taken with nets or traps, while capturing bait, must not be harmed and must be released immediately.

Taking Freshwater Mussels

- Freshwater mussels, including the Asiatic clam (*Corbicula fluminea*), may only be taken from impounded waters, except mussels shall not be taken in Lake Waccamaw and in University Lake (Orange County).
- The daily possession limit for freshwater mussels is 200 in the aggregate, except there is no daily possession limit for the Asiatic clam (*Corbicula fluminea*).

Special Fishing Devices

- Special fishing devices, which may be licensed for the taking of nongame fishes, include the following: archery equipment (see page 42), seines, cast nets, gill nets, dip nets, bow nets, reels, gigs, spear guns, baskets, fish pots, eel pots, traps (excluding crab traps and automobile tires), and hand-crank electrofishers where authorized by local law.
- **Special fishing devices may only be used in waters having designated seasons.** See list (by county) under “Seasons and Waters” on pages 31–35.
- Hand-crank electrofishers are any manually operated device capable of generating a low-voltage electrical current, not to exceed 300 volts, for the taking of catfish.

Term and Use of Special Device Licenses

- The license is valid during a license year (12 months from date of purchase).
- Each user of a special device must have his own license in possession, except that a bow net or dip net may be used by another person who has the owner’s license in his possession.
- Only the principal owner or operator must be licensed when drag seines are used at inland beaches to take mullet.
- **Dip nets may be used in conjunction with a licensed hand-crank electrofisher where authorized by local law to take nongame fish for bait or personal consumption in inland fishing waters with any valid license that provides basic inland fishing privileges.**
- Nongame fishes may be taken with archery equipment (see page 42) under any license that authorizes basic hunting or fishing privileges.

Netting Restrictions

- Stationary nets must not exceed 100 yards in length and must be spaced at least 50 yards apart.
- “Attendance” requires that a fisherman be within 100 yards of his net at all times.
- Stationary nets must run parallel to the nearest shoreline.
- Anchored, fixed or drift gill nets must be marked at each end with two separate yellow buoys, which shall be of solid foam or other solid buoyant material no less than five inches in their smallest dimension. Buoys on each of the nets shall be marked (by engraving buoys or attaching engraved metal or plastic tags) with one of the following: owner’s N.C. vessel registration number, owner’s U.S. vessel documentation name or owner’s last name and initials.
- No wires or ropes associated with a special fishing device may extend across any navigable watercourse.

Fish-Trap Restrictions

- A fish trap may be no more than 60 inches in length and no more than 30 inches in depth or width.
- No lead nets, wing nets or other devices may be attached to the trap nor used within 25 feet of the trap.
- Such devices, when set and left unattended, shall be affixed with a card or tag furnished by the license-holder and upon which his name and address shall be legibly inscribed.

Eel Pot Restrictions

- It is unlawful to use eel pots with mesh sizes smaller than one-half inch by one-half inch.
- Each eel pot must be marked by attaching a floating buoy, which shall be of solid foam or other solid buoyant material and no less than five inches in diameter and no less than five inches in length. Buoys may be of any color except yellow. The owner shall always be identified on the attached buoy by using engraved buoys or by engraved metal or plastic tags attached to the buoy. Such identification shall include one of the following: owner's N.C. vessel registration number, owner's U.S. vessel documentation name, or owner's last name and initials.

Seasons and Waters

- There is no open season for sturgeon. Any sturgeon caught must be immediately released.
- No river herring greater than six inches in length may be taken or possessed, regardless of origin, while boating on or fishing in inland fishing waters of coastal rivers and their tributaries, up to the first impoundment of the main course of the river (listed on page 29), the Lumber River, including Drowning Creek, and all other inland fishing waters east of Interstate 95.
- Nongame fish may be taken year-round with archery equipment (see page 42) in waterfowl impoundments located entirely on game lands and in all inland fishing waters other than the impounded waters on the Sandhills Game Land, Public Mountain Trout Waters, and reservoirs with restrictions on taking grass carp listed on page 29.
- No special fishing devices, including crab pots, may be used in designated waterfowl impoundments located on game lands. Exception: Nongame fish may be taken year-round with archery equipment (see page 42) from waterfowl impoundments located entirely on game lands other than the impounded waters on the Sandhills Game Land.
- Seasons and waters, in which use of special devices other than archery equipment (see page 42) is authorized, are indicated by the following counties:

Alamance: July 1 – Aug. 31 with seines in Alamance Creek below N.C. 49 bridge and Haw River. July 1 – June 30 with gigs in all public waters.

Alexander: July 1 – June 30 with traps and gigs in all public waters; and with spear guns in Lake Hickory and Lookout Shoals Reservoir.

Alleghany: July 1 – June 30 with gigs in New River, except Public Mountain Trout Waters.

Anson: July 1 – June 30 with traps and gigs in all public waters. March 1 – April 30 with bow nets in Pee Dee River below Blewett Falls Dam. July 1 – Aug. 31 with seines in all running public waters, except Pee Dee River from Blewett Falls Dam downstream to the Seaboard Coastline Railroad trestle.

Ashe: July 1 – June 30 with gigs in New River (both forks), except Public Mountain Trout Waters.

Beaufort: July 1 – June 30 with traps in the Pungo River and in the Tar-Pamlico River above Norfolk and Southern Railroad bridge; and with gigs in all inland public waters. March 1 – April 30 with bow nets in all inland public waters.

Bertie: July 1 – June 30 with traps in Broad Creek (tributary of Roanoke River). March 1 – April 30 with bow nets in all inland public waters, excluding public lakes, ponds and other impounded waters.

Bladen: March 1 – April 30 with bow nets in Black River; July 1 – March 1 with hand-crank electrofishers in Cape Fear River between Locks and Dams 1 and 3 and Black River (local law), except that hand-crank electrofishing is prohibited within 800

feet downstream and 400 yards upstream of Lock and Dam 1; 400 yards downstream and upstream of Lock and Dam 2; and 400 yards downstream of Lock and Dam 3.

Brunswick: March 1 – April 30 with bow nets in Alligator Creek, Hoods Creek, Indian Creek, Orton Creek below Orton Pond, Rices Creek, Sturgeon Creek and Town Creek.

Buncombe: July 1 – June 30 with gigs in all public waters, except Public Mountain Trout Waters.

Burke: July 1 – Aug. 31 with seines in all running public waters, except Johns River and Public Mountain Trout Waters. July 1 – June 30 with traps, gigs and spear guns in all public waters, except Public Mountain Trout Waters and Lake James. Fishing by use of an unattended float is prohibited on Lake James (local law).

Cabarrus: July 1 – Aug. 31 with seines in all running public waters. July 1 – June 30 with traps and gigs in all public waters.

Caldwell: July 1 – June 30 with traps, gigs and spear guns in all public waters, except Public Mountain Trout Waters.

Camden: July 1 – June 30 with traps in all inland public waters. March 1 – April 30 with bow nets in all inland public waters, excluding public lakes, ponds and other impounded waters.

Carteret: March 1 – April 30 with bow nets in all inland public waters, except South River and the tributaries of the White Oak River.

Caswell: July 1 – June 30 with gigs in all public waters. July 1 – Aug. 31 with seines in all running public waters, except Moons Creek. July 1 – June 30 with traps in Hyco Reservoir.

Catawba: July 1 – Aug. 31 with seines in all running public waters, except Catawba River below Lookout Dam. July 1 – June 30 with traps, spear guns and gigs in all public waters.

Chatham: Dec. 1 – April 15 with dip and gill nets in the Cape Fear River, Haw River, Deep River and Rocky River (local law). July 1 – Aug. 31 with seines in the Cape Fear River and Haw River. July 1 – June 30 with traps in Deep River; and with gigs in all public waters.

Cherokee: July 1 – June 30 with gigs in all public waters, except Public Mountain Trout Waters.

Chowan: March 1 – April 30 with bow nets in all inland public waters, excluding public lakes, ponds and other impounded waters. July 1 – June 30 with traps in all inland public waters, excluding public lakes, ponds and other impounded waters.

Clay: July 1 – June 30 with gigs in all public waters, except Public Mountain Trout Waters.

Cleveland: July 1 – Aug. 31 with seines in all running public waters. July 1 – June 30 with gigs, traps and spear guns in all public waters.

Columbus: Dec. 1 – March 1 with gigs in all inland public waters, except Lake Waccamaw and its tributaries. March 1 – April 30 with bow nets in Livingston Creek. July 1 – March 1 with hand-crank electrofishers in Waccamaw and Lumber rivers (local law).

Craven: July 1 – June 30 with traps in the main run of the Trent and Neuse rivers. March 1 – April 30 with bow nets in all inland public waters, except Pitch Kettle, Grindle, Slocum (downstream from the U.S. 70 bridge), Spring and Hancock creeks and their tributaries; and with seines in the Neuse River.

Currituck: July 1 – June 30 with traps in Tulls Creek and Northwest River. March 1 – April 30 with bow nets in all inland public waters, excluding public lakes, ponds and other impounded waters.

Dare: July 1 – June 30 with traps in Mashoes Creek, Milltail Creek, East Lake and South Lake. March 1 – April 30 with bow nets in all inland public waters, excluding public lakes, ponds and other impounded waters.

Davidson: July 1 – Aug. 31 with seines in all running public waters. July 1 – June 30 with gigs in all public waters; and with traps in all public waters except Leonard’s Creek, Abbott’s Creek below Lake Thom-A-Lex Dam and the Abbott’s Creek arm of High Rock Lake upstream from the N.C. 8 bridge.

Davie: July 1 – June 30 with traps and gigs in all public waters. July 1 – Aug. 31 for taking only carp and suckers with seines in Dutchman’s Creek from U.S. 601 to Yadkin River and in Hunting Creek from S.R. 1338 to South Yadkin River.

Duplin: Dec. 1 – June 5 with seines in the main run of the Northeast Cape Fear River downstream from a point one mile above Serecta Bridge. March 1-April 30 with bow nets in the main run of the Northeast Cape Fear River downstream from a point one mile above Serecta Bridge.

Durham: July 1 – Aug. 31 with seines in Neuse River. July 1 – June 30 with gigs in all public waters.

Edgecombe: March 1 – April 30 with bow nets in all public waters.

Forsyth: July 1 – June 30 with traps and gigs in all public waters, except traps may not be used in Belews Creek Reservoir.

Franklin: July 1 – Aug. 31 with seines in Tar River. July 1 – June 30 with gigs in all public waters, except Parrish, Laurel Mill, Jackson, Clifton, Moore’s and Perry’s ponds, and in the Franklinton city ponds.

Gaston: July 1 – Aug. 31 with seines in all running public waters. July 1 – June 30 with gigs, traps and spear guns in all public waters.

Gates: March 1 – April 30 with bow nets in all inland public waters, excluding public lakes, ponds and other impounded waters.

Graham: July 1 – June 30 with gigs in all public waters, except Public Mountain Trout Waters. Special devices are not permitted on Santeetlah Lake, Fontana Lake, Cheoah Reservoir and Calderwood Reservoir (local law).

Granville: July 1 – June 30 with gigs in all public waters, except Kerr Reservoir. July 1 – Aug. 31 with seines in the Tar River below U.S. 158 bridge. July 1 – June 30 with dip and cast nets in Kerr Reservoir.

Greene: March 1 – April 30 with bow nets and reels in Contentnea Creek.

Guilford: July 1 – Aug. 31 with seines in Haw River, Deep River below Jamestown Dam and Reedy Fork Creek below U.S. 29 bridge. July 1 – June 30 with gigs in all public waters.

Halifax: March 1 – April 30 with bow nets in Beech Swamp, Clarks Canal, Conoconnara Swamp, Fishing Creek below the Fishing Creek Mill Dam, Kehukee Swamp, Looking Glass Gut, Quankey Creek and White’s Mill Pond Run. April 1 – June 15 in Fishing Creek on Thursdays, Fridays and Saturdays, shad and herring (not to exceed 6 inches in length) may be taken with skim or gill nets having a bar mesh of not less than 1.5 inch (local law).

Harnett: Jan. 1 – May 31 with gigs in Cape Fear River and tributaries. March 1 – April 30 with bow nets in Cape Fear River.

Haywood: July 1 – June 30 with gigs in all public waters, except Lake Junaluska and Public Mountain Trout Waters.

Henderson: July 1 – June 30 with gigs in all public waters, except Public Mountain Trout Waters.

Hertford: July 1 – June 30 with traps in Wiccacon Creek. March 1 – April 30 with bow nets in all inland public waters, excluding public lakes, ponds and other impounded waters.

Hyde: July 1 – June 30 with traps in all inland waters. March 1 – April 30 with bow nets in all inland public waters, excluding public lakes, ponds and other impounded waters.

Iredell: July 1 – June 30 with traps and gigs in all public waters; and with spear guns in Lookout Shoals Reservoir and Lake Norman.

Jackson: July 1 – June 30 with gigs in all public waters, except Public Mountain Trout Waters.

Johnston: March 1 – April 30 with bow nets in Black Creek, Little River, Middle Creek, Mill Creek, Neuse River and Swift Creek.

Jones: July 1 – June 30 with traps in the Trent River below U.S. 17 bridge and White Oak River below U.S. 17 bridge. March 1 – April 30 with bow nets in all inland public waters, except the tributaries to White Oak River.

(continued on page 34)



AQUATIC HITCHHIKERS!

CLEAN AND DRY ANYTHING THAT COMES INTO CONTACT WITH WATER

Invasive aquatic plants, such as hydrilla and giant salvinia; exotic mussels, such as zebra and quagga mussels; and even algae, like didymo or rock snot, can hitch a ride on fishing and boating gear. Once established, they cause extensive damage to aquatic systems.

We need your help to prevent the spread of nuisance species.

When you leave a body of water:

- Remove any visible mud, plants, fish or animals before transporting equipment.
- Eliminate water from equipment before transporting.
- Clean and dry anything that comes into contact with water (boats, trailers, equipment, clothing, dogs, etc.).
- Never release plants, fish or animals into a body of water unless they came out of that body of water.

For more information, including recommendations for cleaning anything that comes into contact with water, visit:

www.ProtectYourWaters.net

FISH CONSUMPTION ADVISORIES

Elevated levels of some pollutants may be found in certain fish caught by the public or sold commercially in the United States. For more information, contact N.C. Dept. of Health and Human Services at 919-707-5900 or see epi.publichealth.nc.gov and click on "Fish Consumption Advisories." The following table lists current fish consumption advisories for North Carolina inland fishing waters:

| <i>Body of Water</i> | <i>Advisory</i> | <i>Pollutant</i> |
|--|---|---|
| Statewide | Largemouth bass. No consumption by women of childbearing age, pregnant women, nursing mothers and children under 15. No more than one meal per week for all other people. | Mercury |
| Statewide | Bluegill sunfish and trout. No more than two meals per week for women of childbearing age, pregnant women, nursing mothers and children under 15. No more than four meals per week for all other people. | Mercury |
| South and east of Interstate 85 | Blackfish (bowfin), Catfish (caught wild), Jack fish (chain pickerel), Warmouth, and Yellow perch. No consumption by women of childbearing age, pregnant women, nursing mothers and children under 15. No more than one meal per week for all other people. | Mercury |
| South and east of Interstate 95 | Black crappie. No consumption by women of childbearing age, pregnant women, nursing mothers and children under 15. No more than one meal per week for all other people. | Mercury |
| Albemarle Sound from Bull Bay to Harvey Point west to the mouths of the Roanoke and Chowan rivers (Currituck, Camden, Pasquotank, Perquimans, Chowan, Bertie, Washington and Tyrrell counties) | Carp and catfish. No consumption by women of childbearing age or children. No more than one meal per month for all other people. | Dioxins |
| Roanoke River from U.S. Hwy. 17 bridge near Williamston to the mouth of Albemarle Sound (Martin, Bertie and Washington counties) | Carp and catfish. No consumption by women of childbearing age or children. No more than one meal per month for all other people. | Dioxins |
| Welch Creek (Martin, Beaufort and Washington counties) | Carp and catfish. No consumption by women of childbearing age or children. No more than one meal per month for all other people. | Dioxins |
| Brier Creek Reservoir (Wake County), Brier Creek –downstream of Brier Creek Reservoir, and Little Brier Creek and tributaries downstream of Brier Creek Parkway | All fish. No consumption. | PCBs |
| Lake Crabtree (Wake County) | Carp and catfish. No consumption. All other fish. No more than one meal per month. | PCBs |
| Crabtree Creek (Wake County) above and below Lake Crabtree to Neuse River | Carp, catfish and largemouth bass. No more than one meal per month. | PCBs |
| Neuse River (Wake County) downstream of Crabtree Creek to Auburn-Knightdale Road | Carp and catfish. No more than one meal per month. | PCBs |
| Walnut Creek (Wake County) and Rocky Branch tributary just upstream of confluence with Neuse River | Carp and catfish. No more than one meal per month. All other fish. No more than one meal per week. | PCBs |
| Santeetlah Lake (Graham County) and Fontana Lake (Graham and Swain counties) | Walleye. No consumption by women of childbearing age, pregnant women or children under 15. No more than one meal per week for all other people. | Mercury |
| Badin Lake (Stanly and Montgomery counties) | Catfish and largemouth bass. No consumption by women of childbearing age, pregnant women or children under 15. No more than one meal per week for all other people. | PCBs Mercury |
| Lake Gaston (Warren, Halifax, and Northampton counties) | Walleye and largemouth bass. No consumption by women of childbearing age, pregnant women or children under 15. No more than one to two meals per month for all other people. | Mercury |
| Mountain Island Reservoir (Gaston and Mecklenburg counties) | Channel catfish. No consumption. | PCBs |
| Mountain Island Reservoir (Gaston and Mecklenburg counties) | Largemouth bass. No consumption by women of childbearing age, pregnant women, nursing women or children under 15. No more than two meals per month for all other people. | PCBs Mercury |
| Mountain Island Reservoir (Gaston and Mecklenburg counties) | Blue catfish. No consumption by women of childbearing age, pregnant women, nursing women or children under 15. No more than one meal per month for all other people. | PCBs Mercury |
| Lake Wylie (Gaston and Mecklenburg counties) | Largemouth bass. No consumption by women of childbearing age, pregnant women, nursing women or children under 15. No more than two meals per month for all other people. | PCBs Mercury |
| Lake Chatuge (Clay County) | White bass and largemouth bass. No consumption by women of childbearing age or children under 15. No more than one meal per week for all other people. | Mercury |
| Lake Nantahala (Macon County) | Smallmouth bass, walleye, yellow perch, and largemouth bass. No consumption by women of childbearing age or children under 15. No more than one meal per week for all other people. | Mercury |
| Lake Norman (Catawba, Iredell, Lincoln and Mecklenburg counties) | Striped bass. No consumption by women of childbearing age, pregnant women, nursing women or children under 15. No more than one meal per week for all other people. | PCBs |
| Lake Norman (Catawba, Iredell, Lincoln and Mecklenburg counties) | Largemouth bass. No consumption by women of childbearing age, pregnant women, nursing women or children under 15. No more than two meals per month for all other people. | PCBs Mercury |
| Falls Reservoir (Montgomery and Stanly counties), High Rock Lake (Davidson and Rowan counties), and Lake Tillery (Montgomery and Stanly counties) | Catfish. No consumption by women of childbearing age, pregnant women, nursing women or children under 15. No more than one meal per week for all other people. | PCBs Mercury |
| Dan River in North Carolina downstream of the Duke Energy – Dan River Steam Station Spill Site (Caswell and Rockingham counties) | All fish and shellfish. No consumption. | Coal Ash |
| Lake Glennville (Jackson County) | Smallmouth bass, walleye and largemouth bass. No consumption by women of childbearing age, pregnant women, nursing women or children under 15. No more than one meal per month of smallmouth bass or walleye for all other people. No more than one meal per week of largemouth bass for all other people. | Mercury |

- Lee:** Dec. 1 – April 15 with dip and gill nets in Cape Fear River and Deep River (local law). July 1 – Aug. 31 with seines in Cape Fear River. July 1 – June 30 with traps in Deep River; and with gigs in all public waters.
- Lenoir:** July 1 – June 30 with traps in Neuse River below U.S. 70 bridge at Kinston. March 1 – April 30 with bow nets in Neuse River and Contentnea Creek upstream from N.C. 118 bridge at Grifton; and with seines in Neuse River.
- Lincoln:** July 1 – Aug. 31 with seines in all running public waters. July 1 – June 30 with traps, gigs and spear guns in all public waters.
- McDowell:** July 1 – Aug. 31 with seines in all running public waters, except Public Mountain Trout Waters. July 1 – June 30 with traps, gigs and spear guns in all public waters, except Public Mountain Trout Waters and Lake James. Fishing by use of an unattended float is prohibited on Lake James (local law).
- Macon:** July 1 – June 30 with gigs in all public waters, except Public Mountain Trout Waters.
- Madison:** July 1 – June 30 with gigs in all public waters, except Public Mountain Trout Waters.
- Martin:** March 1 – April 30 with bow nets in all inland public waters, excluding public lakes, ponds and other impounded waters.
- Mecklenburg:** July 1 – Aug. 31 with seines in all running public waters. July 1 – June 30 with traps, gigs and spear guns in all public waters, except Freedom Park Pond and Hornet's Nest pond.
- Montgomery:** July 1 – Aug. 31 with seines in all running public waters, except in Pee Dee River between Tillery Dam and Rocky River. July 1 – June 30 with traps and gigs in all public waters.
- Moore:** July 1 – Aug. 31 with seines in all running public waters, except Deep River. July 1 – June 30 with gigs in all public waters, except lakes located on the Sandhills Game Land; and with traps in Deep River and its tributaries.
- Nash:** July 1 – June 30 with gigs in all public waters, except Tar River. March 1 – April 30 with bow nets in the Tar River below Harris' Landing and Fishing Creek below the Fishing Creek Mill Dam.
- New Hanover:** March 1 – April 30 with bow nets in all inland public waters, except Sutton (Catfish) Lake.
- Northampton:** July 1 – June 30 with gigs in all public waters, except Gaston and Roanoke Rapids reservoirs and the Roanoke River above the U.S. 301 bridge. March 1 – April 30 with bow nets in Occoneechee Creek, Old River Landing Gut and Vaughns Creek below Watsons Mill.
- Onslow:** July 1 – June 30 with traps in White Oak River below U.S. 17 bridge. Aug. 1 – March 31 with eel pots in the main run of New River between U.S. 17 bridge and the mouth of Hawkins Creek. March 1 – April 30 with bow nets in the main run of New River and White Oak River, and in Grant's Creek.
- Orange:** July 1 – Aug. 31 with seines in Haw River. July 1 – June 30 with gigs in all public waters.
- Pamlico:** March 1 – April 30 with bow nets in all inland public waters, except Dawson Creek.
- Pasquotank:** July 1 – June 30 with traps in all inland waters, except Dawson Creek. March 1–April 30 with bow nets in all inland public waters, excluding public lakes, ponds and other impounded waters.
- Pender:** Dec. 1 – June 5 with seines in the main run of the Northeast Cape Fear River. March 1 – April 30 with bow nets in the Northeast Cape Fear River, Long Creek, Moore's Creek approximately one mile upstream to New Moon Fishing Camp and Black River. July 1 – March 1 with hand-crank electrofishers in Black River (local law).
- Perquimans:** July 1 – June 30 with traps in all inland waters. March 1 – April 30 with bow nets in all inland public waters, excluding public lakes, ponds and other impounded waters.
- Person:** July 1 – Aug. 31 with seines in Hyco Creek and Mayo Creek. July 1 – June 30 with gigs in all public waters.
- Pitt:** July 1 – June 30 with traps in Neuse River and in Tar River below the mouth of Hardee Creek east of Greenville. March 1 – April 30 with bow nets in all inland public waters, except Grindle Creek, and Contentnea Creek between N.C. 118 bridge at Grifton and the Neuse River. March 1 – April 30 with seines in Tar River.
- Polk:** July 1 – June 30 with gigs in all public waters, except Public Mountain Trout Waters.
- Randolph:** July 1 – Aug. 31 with seines in Deep River above the Coleridge Dam and in Uwharrie River. July 1 – June 30 with gigs in all public waters.
- Richmond:** July 1 – Aug. 31 with seines in all running public waters, except Pee Dee River from Blewett Falls Dam downstream to the Seaboard Coastline Railroad trestle. July 1 – June 30 with traps and gigs in all public waters, except lakes located on the Sandhills Game Land. March 1 – April 30 with bow nets in Pee Dee River below Blewett Falls.
- Robeson:** Dec. 1 – March 1 with gigs in all inland public waters.
- Rockingham:** July 1 – Aug. 31 with seines in Dan River and Haw River. July 1 – June 30 with traps in Dan River; and with gigs in all public waters.
- Rowan:** July 1 – Aug. 31 with seines in all running public waters. July 1 – June 30 with traps and gigs in all public waters.
- Rutherford:** July 1 – Aug. 31 with seines in all running public waters, except Public Mountain Trout Waters. July 1 – June 30 with traps, gigs and spear guns in all public waters, except Public Mountain Trout Waters.
- Sampson:** March 1 – April 30 with bow nets in Big Coharrie Creek, Black River and Six Runs Creek. July 1 – March 1 with hand-crank electrofishers in Black River downstream of N.C. 1105 bridge (local law).
- Stanly:** July 1 – Aug. 31 with seines in all running public waters, except Pee Dee River between Tillery Dam and Rocky River. July 1 – June 30 with traps and gigs in all public waters.
- Stokes:** July 1 – June 30 with traps and gigs in all public waters, except Public Mountain Trout Waters; and traps may not be used in Belews Creek Reservoir.
- Surry:** July 1 – June 30 with gigs in all public waters, except Public Mountain Trout Waters; and with traps in the main stem of Yadkin River.
- Swain:** July 1 – June 30 with gigs in all public waters, except Public Mountain Trout Waters. Special devices are not permitted on Santeetlah Lake, Fontana Lake, Cheoah Reservoir and Calderwood Reservoir (local law).
- Transylvania:** July 1 – June 30 with gigs in all public waters, except Public Mountain Trout Waters.
- Tyrrell:** July 1 – June 30 with traps in Scuppernong River and Alligator Creek. March 1 – April 30 with bow nets in all inland public waters, excluding Lake Phelps, the drainage canals that connect Lake Phelps and Scuppernong River, public lakes, ponds and other impounded waters.
- Union:** July 1 – Aug. 31 with seines in all running public waters. July 1 – June 30 with traps and gigs in all public waters.
- Vance:** July 1 – Aug. 31 with seines in the Tar River. July 1 – June 30 with gigs in all public waters, except Rolands, Faulkners, Southerlands and Weldon ponds, City Lake, and Kerr Reservoir. July 1 – June 30 with dip and cast nets in Kerr Reservoir.

- Wake:** July 1 – June 30 with gigs in all public waters, except Sunset, Benson, Wheeler, Raleigh and Johnson lakes.
March 1 – April 30 with bow nets in the Neuse River below Milburnie Dam, and Swift Creek below Lake Benson Dam.
- Warren:** July 1 – Aug. 31 with seines in Fishing Creek, Shocco Creek and Walker Creek, excluding Duck and Hammes Mill ponds. July 1 – June 30 with gigs in all public waters, except Duck and Hammes Mill ponds, Kerr Reservoir and Gaston Reservoir.
July 1 – June 30 with dip and cast nets in Kerr Reservoir.
- Washington:** March 1 – April 30 with bow nets in all inland public waters, excluding Lake Phelps, the drainage canals that connect Lake Phelps and Scuppernong River, public lakes, ponds and other impounded waters.
- Wayne:** March 1 – April 30 with bow nets in Little River, Mill Creek and Neuse River.
- Wilkes:** July 1 – June 30 with traps in Yadkin River below W. Kerr Scott Reservoir; and with gigs and spear guns in all public waters, except Public Mountain Trout Waters.
- Wilson:** July 1 – June 30 with gigs in Contentnea Creek (except Buckhorn Reservoir), including unnamed tributaries between Flowers Mill and S.R. 1163 (Deans) bridge. March 1 – April 30 with bow nets in Contentnea Creek below U.S. 301 bridge and in Toisnot Swamp downstream from the Lake Toisnot Dam.
- Yadkin:** July 1 – June 30 with gigs in all public waters, and with traps in the main stem of Yadkin River.

If you catch an exotic species such as a snakehead, silver carp, or bighead carp, DO NOT RELEASE IT! Please keep the fish, freeze it or place it on ice and contact the Wildlife Resources Commission at 919-707-0220

MISCELLANEOUS PROHIBITIONS

Possession of Certain Fishes

- It is unlawful to transport, purchase, possess or sell any live individuals of piranha, “walking catfish” (*Clarias batrachus*), snakehead fish (from the Family *Channidae*, formerly *Ophiocephalidae*), white amur or “grass carp” (*Ctenopharyngodon idella*) (see exception below), black carp (*Mylopharyngodon piceus*), bighead carp (*Hypophthalmichthys nobilis*), silver carp (*Hypophthalmichthys molitrix*), swamp or rice eel (*Monopterus albus*), red shiner (*Cyprinella lutrensis*), rudd (*Scardinius erythrophthalmus*), round goby (*Neogobius melanostomus*), tubenose goby (*Proterorhinus marmoratus*), ruffe (*Gymnocephalus cernuus*), Japanese mystery snail (*Cipangopaludina japonica*), Chinese mystery snail (*Cipantopaludina chinensis malleata*), red-rim melania (*Melanoides tuberculatus*), virile crayfish (*Orconectes Gremicambarus virilis*), rusty crayfish (*Orconectes Procericambarus rusticus*), Australian red claw crayfish or “red claw” (*Cherax quadricarinatus*) or other species of “giant” crayfish species in the genus *Cherax*, or zebra mussel (*Dreissena polymorpha*) or quagga mussel (*Dreissena rostriformis bugensis*) or any mussel in the family *Dreissenidae*, or to stock any of them in the public or private waters of North Carolina.
- Certified triploid grass carp may be bought, possessed and stocked with a permit from the Wildlife Resources Commission.
- It is unlawful to take or possess any state or federally designated endangered, threatened, or species of special concern, including surgeon from the inland waters of North Carolina.

- It is unlawful to possess, transport or release live alewife or blueback herring in the Little Tennessee River including its tributaries and impoundments.
- It is unlawful to possess, transport or release live White Perch in waters in and west of Haywood, Buncombe and Rutherford counties.**
- It is unlawful to stock fish into public fishing waters without a permit from the Wildlife Resources Commission.

FISHING ACCESS AREA REGULATIONS

It is unlawful to:

- Use any public fishing area for purposes other than fishing, except where facilities are provided and approved uses are posted. All other uses—including swimming, sunbathing on piers or decks, launching or mooring jet skis or boats, skiing, building fires, operating concessions or other activities not directly associated with fishing—are prohibited.
- Possess a loaded firearm other than a handgun possessed pursuant to a valid concealed handgun permit on those public fishing areas where concealed carry is allowed by the landowner. Carrying any loaded firearm, including concealed handguns, is not allowed on public fishing areas at Bladen Lakes State Forest Game Land, Buckhorn Butner-Falls of Neuse Game Land, Chatham Game Land, DuPont State Forest Game Land, Harris Game Land, Hyco Game Land, Jordan Game Land, Kerr Scott Game Land, Lee Game Land, Mayo Game Land, Pee Dee River Game Land north of U.S 74, Sutton Lake Game Land, Vance Game Land, the portion of R. Wayne Bailey-Caswell Game Land that is located north of U.S. 158 and east of N.C. 119, and any other posted public fishing area.
- Use gasoline motors on Lake Rim in Cumberland County, and on Newbold and Etheridge ponds in Edgecombe County.

Protect Your Waters— Don't Move That Fish!

Illegal fish introductions can have long-lasting, negative impacts, such as altering the existing aquatic community through predation or competition; introducing diseases, parasites and unwanted fish species; and degrading water quality and habitat. Once established, stocked fishes are nearly impossible to eradicate.

DO YOUR PART TO PROTECT NORTH CAROLINA'S WATERS FROM THE DAMAGES OF ILLEGAL FISH INTRODUCTIONS:

- Don't release live bait fish or aquarium fish.**
- Don't move live fish or aquatic wildlife from one body of water to another.**



PUBLIC ACCESS FOR FISHING ONLY

- Where access to inland fishing waters is provided through private property under an agreement with the landowner, the area is marked by sign indicating Public Access for Fishing Only.
- Any licensed angler and accompanying youths may cross the private property signed as Public Access for Fishing Only in order to access public waters for the purpose of fishing.
- Anglers using these areas are prohibited from entering before 7 am or remaining on the property after 9 pm, building fires, littering, swimming, launching or retrieving boats, and camping while on the private property unless otherwise posted.

BOATING ACCESS AREA REGULATIONS

It is unlawful to:

- Leave any vehicle, trailer, boat or other obstruction where it will impede the use of the ramp by others.
- Park any vehicles, trailer or boat anywhere on the area when the parking zone is fully occupied. This does not prohibit legal use of the ramp.
- Use the area for swimming, camping, operating concessions or for any use other than the launching and recovery of boats and parking of vehicles and boat trailers, except where facilities for a particular use are provided.
- Operate any vessel within 50 yards of the ramp at a speed greater than "No Wake" speed.
- Possess a loaded firearm other than a handgun possessed pursuant to a valid concealed handgun permit on those boating access areas where concealed carry is allowed by the landowner. Carrying any loaded firearm, including concealed handguns, is not allowed on boating access areas at Bladen Lakes State Forest Game Land, Buckhorn Butner-Falls of Neuse Game Land, Chatham Game Land, DuPont State Forest Game Land, Harris Game Land, Hyco Game Land, Jordan Game Land, Kerr Scott Game Land, Lee Game Land, Mayo Game Land, Pee Dee River Game Land north of U.S 74, Sutton Lake Game Land, Vance Game Land, the portion of R. Wayne Bailey-Caswell Game Land that is located north of U.S. 158 and east of N.C. 119, and any other posted boating access area.
- Operate a vehicle on any boat access area in a manner so as to endanger life or property.
- Deposit any debris or refuse anywhere on the grounds of the area.
- Fail to obey any instruction or signs regulating use of the access area.
- Conduct a fishing tournament weigh-in without first obtaining a letter of authorization from the Division of Engineering and Lands Management at ncwildlife.org/boating or by calling 919-707-0150. This permit must be available for inspection by wildlife enforcement officers during the tournament.
- Park in a handicapped space without displaying a handicapped plate or sign.

HYDROELECTRIC STATION SAFETY ZONES

- A 100-foot safety zone extends both upstream and downstream of the following hydroelectric stations. Only fishing and boating are authorized within the safety zone, subject to the following restrictions:
- All boaters within the safety zone are required to wear approved U.S. Coast Guard personal flotation devices.
- Any anglers within the safety zone that enter the water are required to wear an approved U.S. Coast Guard personal flotation device.
- No vessel may anchor within this zone or tie off to any part of the hydroelectric station structure.

Catawba River:

Bridgewater Hydroelectric Station (Paddy Creek, Linville and Catawba dams)

Cowans Ford Hydroelectric Station

Lookout Hydroelectric Station

Mountain Island Hydroelectric Station

Oxford Hydroelectric Station

Rhodhiss Hydroelectric Station

Green River:

Tuxedo Hydroelectric Station

Yadkin River:

Narrows Hydroelectric Station

High Rock Hydroelectric Station

OTHER FISHING INFORMATION

For fishing information relating to land administered by other agencies, contact the appropriate agency:

- Blue Ridge Parkway (see page 28), 199 Hemphill Knob Road, Asheville, NC 28803. Telephone: 828-271-4779
- Eastern Band of Cherokee Indians, Cherokee Fish and Game Management, P.O. Box 302, Cherokee, NC 28719. Telephone: 800-438-1601
- Great Smoky Mountains National Park, 107 Park Headquarters Rd., Gatlinburg, TN 37738. Telephone: 865-436-1200
- U.S. Forest Service Wilderness Areas, National Forests in North Carolina, 160 Zillicoa St., Asheville, NC 28801. Telephone: 828-257-4200
- Division of Marine Fisheries, P.O. Box 769, Morehead City, NC 28557. Telephone: 800-682-2632
- U.S. Fish and Wildlife Service National Wildlife Refuges (See pages 44–46 for contact information)

NORTH CAROLINA ANGLER RECOGNITION PROGRAM

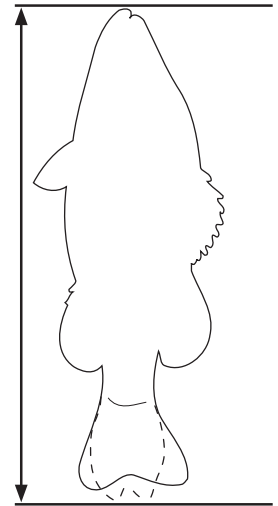
Any angler who catches a fish in North Carolina meeting specific size requirements can apply to have the catch recognized as a "trophy" fish through the North Carolina Angler Recognition Program, or NCARP. This program provides recognition to all anglers who catch trophy-size fish that are not large enough to qualify as state record fish.

Youth age 15 and younger may apply for a Youth NCARP certificate. Youth NCARP certificates are available for any fish listed below and do not have to meet any minimum length and weight requirements.

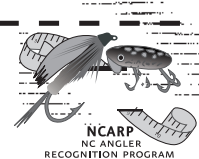
North Carolina Angler Recognition Program minimum trophy fish weight or length requirements

| SPECIES | WEIGHT | LENGTH | SPECIES | WEIGHT | LENGTH |
|--------------------------|---------------|--------|-----------------------|---------|--------|
| Bass | | | Muskellunge | 20 lbs. | 41" |
| Bodie (hybrid) Bass | 8 lbs. | 24" | Perch | | |
| Largemouth Bass | 8 lbs. | 24" | White Perch | 1 lb. | 12" |
| Smallmouth Bass | 3 lbs. | 19" | Yellow Perch | 1 lb. | 14" |
| Spotted Bass | 2 lbs. | 15" | Pickereel | | |
| Striped Bass | 10 lbs. | 27" | Chain Pickerel | 4 lbs. | 26" |
| White Bass | 2 lbs. | 17" | Redfin Pickerel | 10 oz. | 12" |
| Bowfin | 10 lbs. | 22" | Shad | | |
| Carp-Common | 20 lbs. | 34" | American | 3 lbs. | 16" |
| Catfish | | | Hickory | 2 lbs. | 13" |
| Blue | 30 lbs. | 41" | Sunfish | | |
| Bullhead (any species) | 2 lbs. | 15" | Bluegill | 1 lb. | 11" |
| Channel | 10 lbs. | 30" | Flier | 6 oz. | 8" |
| Flathead | 30 lbs. | 41" | Green | 1 lb. | 9" |
| White | 4 lbs. | 21" | Pumpkinseed | 14 oz. | 10" |
| Crappie (black or white) | 2 lbs. | 16" | Redbreast (Robin) | 1 lb. | 11" |
| Freshwater Drum | 12 lbs. | 28" | Redear (Shellcracker) | 1 lb. | 11" |
| Kokanee Salmon | 2 lbs. | 14" | Roanoke Bass | 1 lb. | 11" |
| Longnose Gar | 10 lbs. | 48" | Rock Bass | 1 lb. | 11" |
| Mountain Trout | | | Warmouth | 1 lb. | 11" |
| Brook | 2 lbs. | 16" | Walleye | 5 lbs. | 23" |
| Brown | 2 lbs., 8 oz. | 18" | | | |
| Rainbow | 2 lbs., 8 oz. | 18" | | | |

Fish should be measured to the nearest ¼ inch. Lay the fish on a flat surface. Using a measuring rule, measure from the tip of the snout to the end of the tail with mouth closed and tail lobes pressed together.



NCARP Application Form



Form must be filled out completely. Please print. Hook & line only (rod & reel or cane pole)

Angler Information

Full Name _____ E-mail (optional) _____
First Middle Last

Date of Birth _____ Phone number () _____ WRC # (if available) _____
Month Day Year

Street Address _____

City _____ State _____ Zip Code _____

Fish Information

Kind of Fish _____ Date Caught _____

Weight _____ lbs. _____ oz. OR Length _____ in.

Name of water body where caught _____ County _____

Type of Water Pond Reservoir/Lake River/Stream Sound/Bay

Bait Natural Artificial Did you release the fish? Yes No Check if angler is 15 years or younger

Enclose a check or money order for \$5 payable to NCWRC-NCARP and mail to:
 N.C. Wildlife Resources Commission, Inland Fisheries Division
 1721 Mail Service Center, Raleigh, N.C. 27699-1700

APPLYING FOR A FRESHWATER FISHING RECORD

The Wildlife Resources Commission maintains records for popular freshwater sport fishes caught by rod and reel or cane pole in state waters. State record fish must be weighed on scales certified by the N.C. Department of Agriculture and verified by a Wildlife Resources Commission fisheries biologist (or biologist designated by the Commission). For an application form and other requirements, visit ncwildlife.org/fishingrecords, or call the Inland Fisheries Division at 919-707-0220.

| NORTH CAROLINA FRESHWATER FISHING RECORDS | | | | | |
|--|--------------------------|--|-------------|-----------------------|-----------------------------|
| <i>Species</i> | <i>Weight Lbs/Oz</i> | <i>Location</i> | <i>Date</i> | <i>Angler's Name</i> | <i>Lure or Bait</i> |
| BASS | | | | | |
| Bodie (striped bass hybrid) | 17/7 | Lake Chatuge | 3/15/96 | Michael R. Hogsed | Rebel jointed plug |
| Roanoke | 2/11 | Fishing Creek, Nash Co. | 4/27/94 | Richard Elijah Evans | Spinner bait |
| Largemouth | 15/14 | Pond, Union Co. | 3/29/91 | William H. Wofford | Crankbait |
| Rock (Redeye) | 1/14 | Deep River | 4/29/98 | Robert W. Lytton | Crappie jig |
| Smallmouth | 10/2 | Hiwassee Reservoir | 6/1/51 | Archie Lamkin | Unknown |
| Spotted | 6/5 | Lake Norman | 12/26/03 | Eric M. Weir | Zoom Finesse Worm |
| Striped | 66/0 | Hiwassee Reservoir | 3/31/12 | Tyler Shields | Zoom Trick Worm |
| White | 5/14 | Kerr Reservoir | 3/15/86 | Jim King | Bucktail |
| CATFISH | | | | | |
| Blue | 117/8 | Lake Gaston | 6/11/16 | Landon Evans | Cut bait, shad |
| Flathead | 78/0 | Cape Fear River | 9/17/05 | Brian Newberger | Eel |
| White | 13/0 | Lake James | 5/21/90 | Jerry Wayne Bentley | Nightcrawler |
| Channel | 23/4 | City Lake, Rocky Mount | 9/1/70 | E. J. Bowden | Shrimp |
| Brown bullhead | 4/0 | Greenfield Lake, New Hanover Co. | 3/14/16 | Mitchell McConnell | Cut bait |
| PERCH | | | | | |
| White | 2/15 | Falls of the Neuse Reservoir | 12/16/01 | Bob G. Williams Jr. | Strata Spoon |
| Yellow | 2/9 | Indiantown Creek | 2/8/90 | Evelyn G. Ethridge | Minnow |
| PICKEREL | | | | | |
| Chain | 8/0 | Gaston Reservoir | 2/13/68 | John H. Leonard | Minnow |
| Redfin | 2/4 | Gallberry Swamp | 6/23/97 | Edward C. Davis | Minnow |
| SHAD | | | | | |
| American | 7/15 | Tar River | 4/10/74 | R.S. Proctor | Shad dart |
| Hickory | 4/1 | Pitchkettle Creek | 2/22/04 | Trey Maroules | Spoon |
| SUNFISH | | | | | |
| Redear (Shellcracker) | 4/15 | Pond, Edgecombe Co. | 5/19/08 | Travis Jackson | Worm |
| Bluegill | 4/5 | Henderson County | 7/27/67 | Danny Case | Catawba worm |
| Flier | 1/5 | Pond | 3/17/90 | Douglas N. McCall | Cricket |
| Green | 1/15 | Pond, Ashe Co. | 7/12/14 | Victoria Navaroli | Worm |
| Redbreast | 1/12 | Big Swamp, Bladen Co. | 5/29/83 | Ronald Stanley | Beetle Spin |
| Warmouth | 1/13 | McLeods Pond, Richmond Co. | 5/7/76 | Emma Sears | Minnow |
| Pumpkinseed | 1/6 | Trent River | 5/21/03 | John Koonce | Eel |
| TROUT | | | | | |
| Brook | 7/7 | Raven Fork River | 5/15/80 | G.L. Marshall, Jr. | Rooster Tail |
| Brown | 24/10 | Nantahala River | 4/17/98 | Robert Lee Dyer | Rapala |
| Rainbow | 20/3 | Horsepasture River | 1/28/06 | Leah Johnson | Rapala |
| OTHER | | | | | |
| Bowfin | 17/15 | Black River | 6/21/97 | Gregory A. Demery Sr. | Cut bait, sunfish |
| Carp | 48/0 | Pond, Mecklenburg Co. | 3/11/86 | William Houston Jr. | Unknown |
| Crappie, black | 4/15 | Asheboro City Lake #4 | 4/27/80 | Dean Dixon | Minnow |
| Crappie, white | 3/15 | Private lake, Wake County | 4/1/13 | Joey Boretta | Storm WildEye® Swim Shad |
| Freshwater drum | 23/8 | Kerr Reservoir | 3/20/13 | Jonathan Wilkerson | Plastic fluke |
| Grass carp | 68/12 | Summerlins Pond, Leland | 6/8/98 | David W. Stowell | Rebel Pop R |
| Longnose gar | 25/0 | Intracoastal Waterway near Coinjock | 1/30/09 | Kelly Williams | Tube minnow |
| Kokanee salmon | 4/1 | Nantahala Lake | 6/11/14 | Jeffery Todd Smith | Dodgers and flashers |
| Muskellunge | 41/8 | Lake Adger | 1/23/01 | Richard W. Dodd | Big Mack |
| Muskellunge, tiger* | 33/8 | Lake James | 4/3/88 | Gary Dean Nanney | Buzzbait |
| Pike, northern* | 11/13 | Lake James | 8/26/78 | Keith Gilliam | Storm Wiggle Wart |
| Sauger | 5/15 | Lake Norman | 7/25/71 | David Shook | Top water Rapala |
| Smallmouth buffalo | 88/0 | Lake Wylie | 11/14/93 | Tony Crawford | Pack bait |
| Walleye | 13/8 | Lake Chatuge (Shooting Cr.) | 8/16/86 | Lamar L. Cofer | Old Faithful spoon |

*These fishes are no longer present in North Carolina waters.